



LOCALIZATION ON DISASTER RESPONSE

Bangkok, 22 February 2018

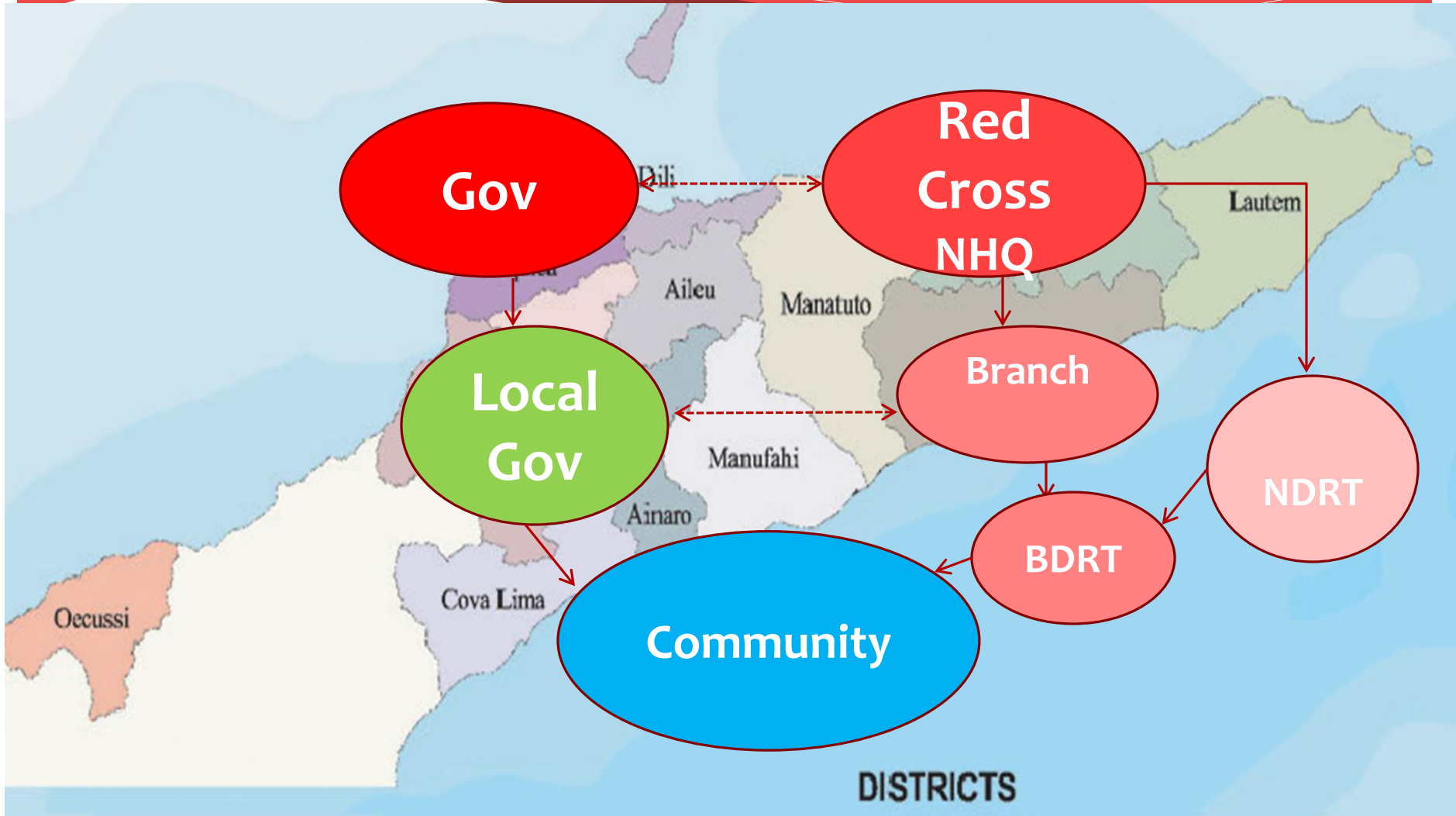


Background

- Timor-Leste is vulnerable to a number of natural hazards and man-made conflict. Each year the country experiences floods, landslides and erosion resulting from the combination of heavy monsoonal rain, steep topography and widespread deforestation.
- Timor-Leste with total population is 1.241 million (census 2015) is one of flood prone area and mostly heated the areas in south part of Timor and this event results in considerable disruption to transport and other essential services and increasing casualties.
- Geographically, Timor Leste located in flat area with and susceptible affected by flash flood especially in coast municipality such as Covalima, Manufahi, Viqueque, Manatuto, Liquica, Bobonaro Dili and Ainaro as well as Secondary hazards such as drought, landslide, strong wind and disease outbreak (dengue, malaria, skin disease) are made people weak to cope with.



Structure of Work



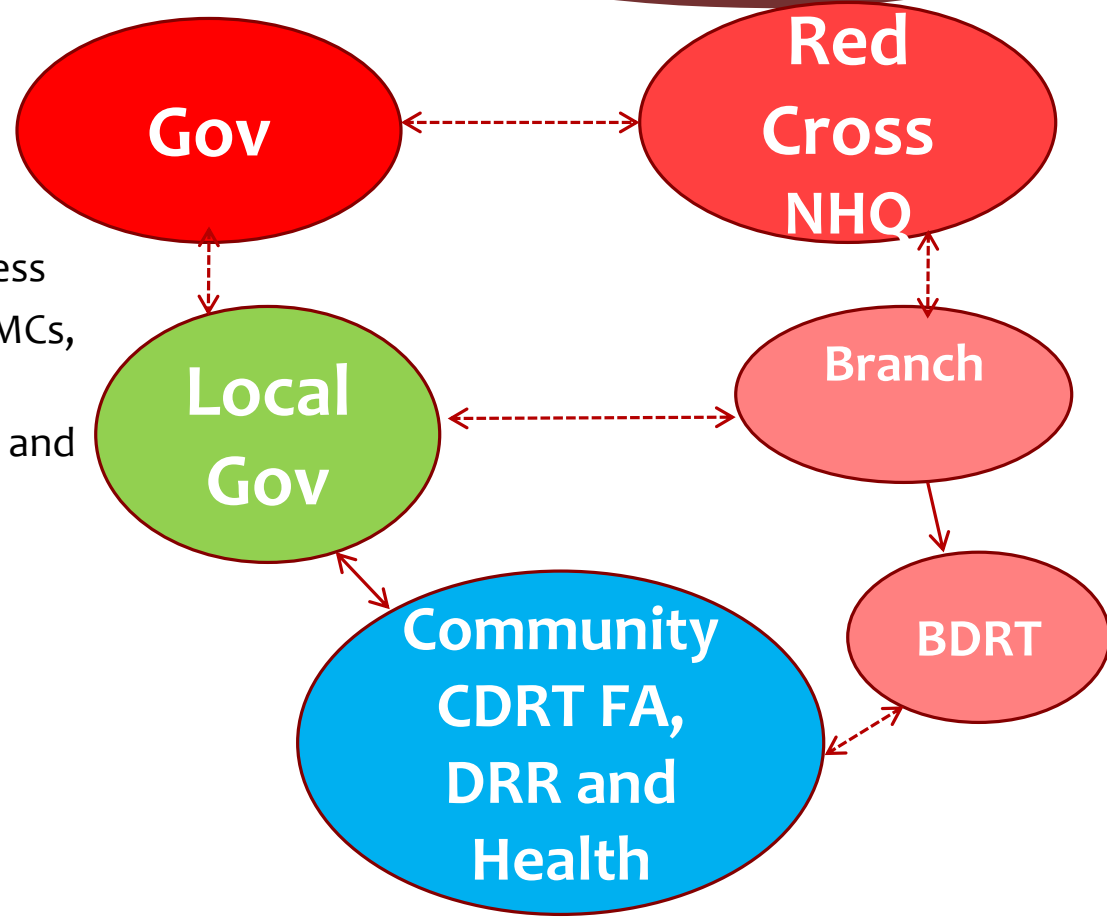


Gaps

- * Lack of resources in local level
- * National and local response plan
- * Too many extra hand to localized aid
- * Centralize Funding



What can be done better



- * Local disaster response and preparedness
- * Establish and strengthening DDMCs, SDDMCs, and SDMCs structure
- * Link all community unit with local gov and branch
- * Community access direct support



Future Support

- * Local emergency response funds
- * Technical support (local response system ej: CP)



Loading Relief Item





Relief Distribution



CRUZ VERMELHA
DE TIMOR-LESTE



Obrigado
Barak
Thank you

