



The Framework for Disaster Management and Emergency Response in The Kingdom of Thailand

BY

Mr.Montree Chanachaviboonwat

Bureau of Disaster Management Policy

Dept.of Disaster Prevention & Mitigation ; Min. of Interior, Thailand

E-mail:montrichat@yahoo.com Web:http://www.disaster.go.th

- 1. THAILAND FACTS & FIGURES.***
- 2. RANK ORDER OF DISASTER RISK IN THAILAND***
- 3. DISASTER MANAGEMENT***
- 4. NATIONAL DISASTER PREVENTION AND MITIGATION PLAN 2010 - 2014***

1. Thailand Facts & Figures

Total area: 513,120 sq km

- water: 2,230 sq km
- land: 510,890 sq km

Land boundaries: 4,863 km

Borders:

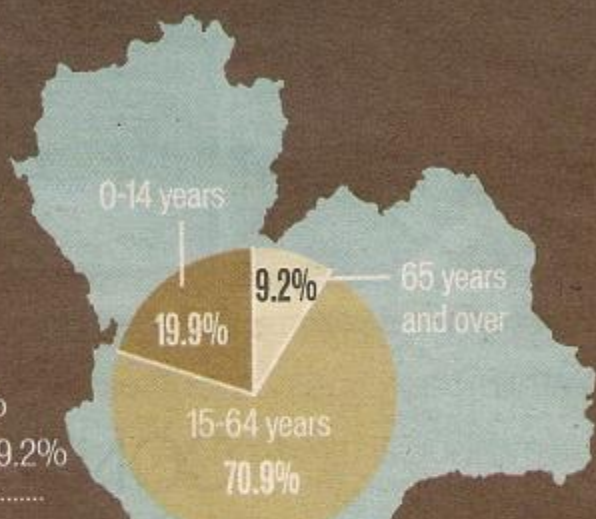
- Burma 1,800 km
- Cambodia 803 km
- Laos 1,754 km
- Malaysia 506 km

Coastline: 3,219 km

Arable land: 27.54%

POPULATION
67,764,033
(Dec 2010 est)
World ranking: 20

Age structure:
0-14 years: 19.9%
15-64 years: 70.9%
65 years and over: 9.2%




Median age:
34.2 years

- Male: 33.3 years
- Female: 35.2 years

■ **Population growth rate:**
0.566%
World ranking: 147

■ **Birth rate:**
12.95 births/1,000 population
World ranking: 153

■ **Death rate:** 7.29 deaths/1,000 population
World ranking: 123





1. Thailand Facts & Figures

- **Fertility rate:** 1.66 children born/woman
World ranking: 172

- **Infant mortality rate:** 16.39 deaths/1,000 live births
World ranking: 108

- **Life expectancy at birth:** 73.6 years
 - **Male:** 71.24 years · **Female:** 76.08 yearsWorld ranking: 113

- **Education expenditure:** 4.1% of GDP (2009)
World ranking: 103

COMMUNICATIONS

Airports: 105 **Railways:** 4,071 km

Telephones

- **Fixed lines:** 7.024 million World ranking: 27

- **Mobile:** 83.057 million World ranking: 14

- **Internet users:** 17.48 million World ranking: 23

Source: National Statistical Office, Bank of Thailand, World Bank, CIA World Factbook



DEPT. OF DISASTER PREVENTION AND MITIGATION
MINISTRY OF INTERIOR

2. RANK ORDER OF DISASTER RISK IN THAILAND

Relative Hazard Risk, Associated Vulnerabilities, Level of their Management and Risk of Disaster Occurrence in Thailand *

	Hazard	Vulnerability	Management	Risk
<i>Flood</i>	<i>High</i>	<i>Moderate</i>	<i>Moderate</i>	<i>High</i>
Typhoon & Storm surge	High	High	Moderate	Moderate
Earthquake	Low	Low	Poor	Moderate
Landslide	Moderate	Low	Poor	Moderate
Drought	High	Moderate	Moderate	Moderate
Fire	High	Moderate	Moderate	Moderate
Explosion	High	Moderate	Poor	High
Major Accident	High	Moderate	Poor	High
Epidemic	Low	Low	Moderate	Low
Pest	Moderate	Low	Poor	Moderate
Civil Unrest	Low	Low	Poor	Moderate
Refugee Influx	Moderate	Low	Moderate	Moderate

* Source : Strengthening Disaster Management Strategies in Thailand, Asian Disaster Preparedness Center (ADPC), Sponsored by UNDP under THA/88/004, March 1994.

Rank Order of Disaster Risk in Thailand*

Hazard	Subjective Rank	Numeric Weight
<i>Flood</i>	<i>High</i>	<i>2.39</i>
Major Accidents	High	2.37
Explosion	High	2.34
Typhoon	Moderate	2.31
Drought	Moderate	2.24
Fire	Moderate	2.20
Landslide	Moderate	2.15
Earthquake	Moderate	1.97
Civil Unrest	Moderate	1.92
Refugee Influx	Moderate	1.87
Pests	Moderate	1.77
Epidemics	Low	1.63

* Source: Annex E, Page E4, Strengthening Disaster Management Strategies in Thailand, Asian Disaster Preparedness Center (ADPC), Sponsored by UNDP under THA/88/004, March 1994.

Flood in Thailand 2011.



DISASTER RANK ORDER FROM COMPENSATION BUDGET BACK FOR 10 YEARS (2003 – 2012)

<i>No.</i>	<i>Type of Disaster</i>	<i>%</i>
<i>1</i>	<i>Flood</i>	<i>58.28</i>
<i>2</i>	<i>Drought</i>	<i>18.53</i>
<i>3</i>	<i>Pest Epidemics</i>	<i>4.93</i>
<i>4</i>	<i>Cold Spells</i>	<i>4.32</i>
<i>5</i>	<i>Storm</i>	<i>3.18</i>

<i>No.</i>	<i>Type of Disaster</i>	<i>%</i>
<i>6</i>	<i>Avian Flu</i>	<i>2.30</i>
<i>7</i>	<i>Fire</i>	<i>0.94</i>
<i>8</i>	<i>Tsunami</i>	<i>0.82</i>
<i>9</i>	<i>Intermittent Rain</i>	<i>0.33</i>
<i>10</i>	<i>Civil Unrest</i>	<i>0.25</i>

As of Sept 30, 2012

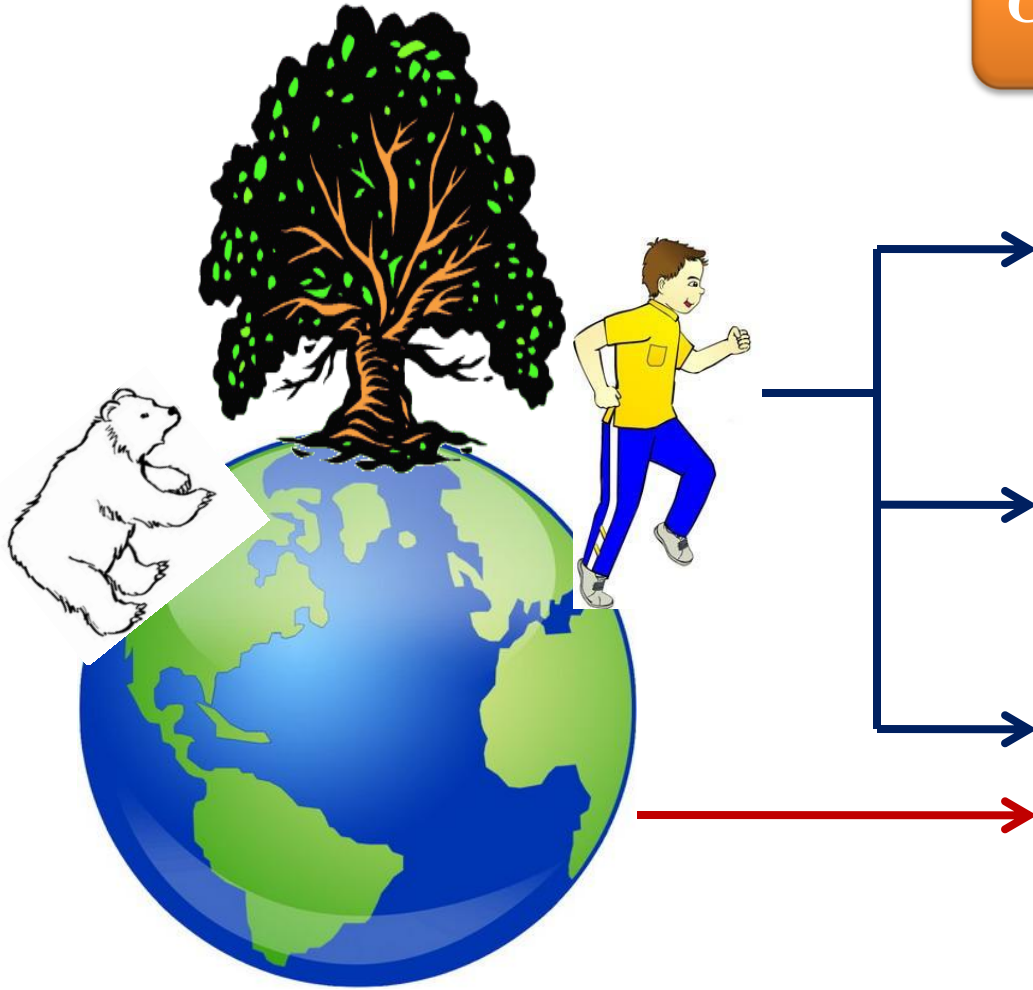


**DEPT. OF DISASTER PREVENTION AND MITIGATION
MINISTRY OF INTERIOR**

3. Disaster Management : DM

**DISASTER MANAGEMENT AT NATIONAL
AND
LOCAL LEVEL**

CAUSES OF DISASTER



Security Treat

Man Made Disaster

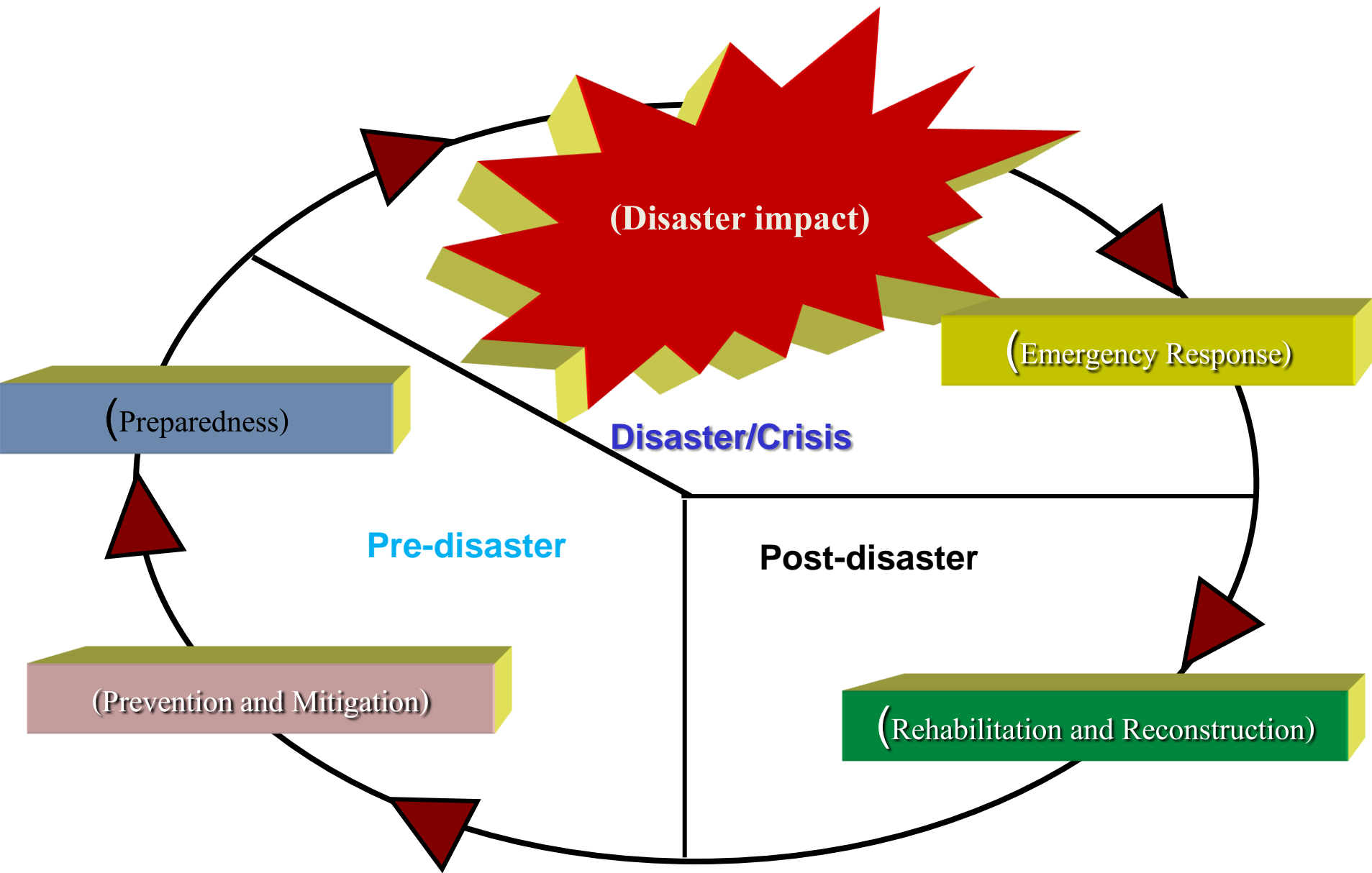
Natural Disaster



DEPT. OF DISASTER PREVENTION AND MITIGATION
MINISTRY OF INTERIOR

STRUCTURE OF DISASTER MANAGEMENT

(Disaster Management Cycle)



Disaster Management Mechanisms

1. Disaster Management Structure

- Policy Level : National Disaster Prevention and Mitigation Committee
- Command and Control Level
- Operation Level

Disaster Management Mechanisms

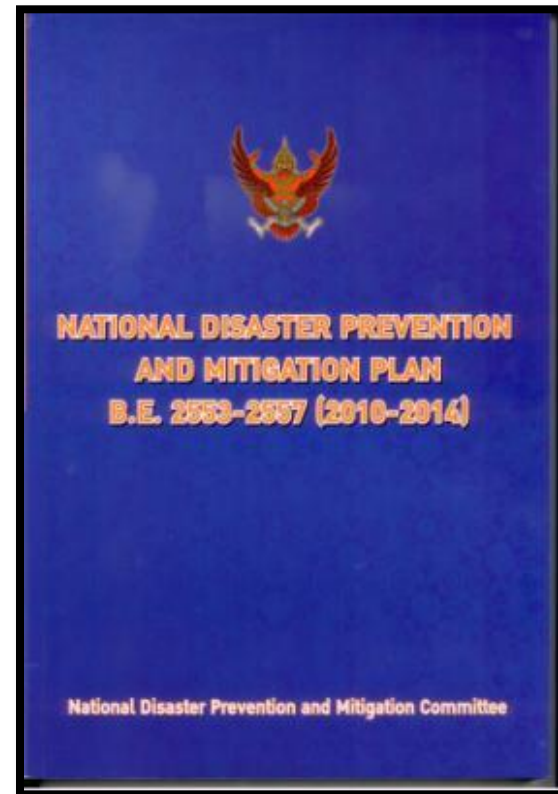
2 Disaster Prevention and Mitigation Plan

- National Disaster Prevention and Mitigation Plan
- Master Plan for each Disaster Sub Type
- DPM Provincial Plan
- Annual Plan Exercise at all level



DEPT. OF DISASTER PREVENTION AND MITIGATION
MINISTRY OF INTERIOR

4. NATIONAL DISASTER PREVENTION AND MITIGATION PLAN 2010 - 2014





National Disaster Management Plan

Main Concepts of National Disaster Management Plan

It is composed of 3 components;

Component 1 : Disaster Management Principle

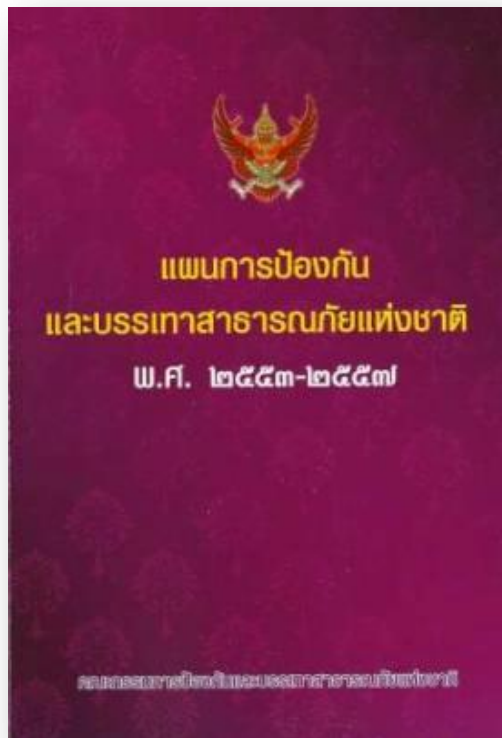
Component 2 : Types of Disaster Management Procedures

Component 3: Types of Security Disaster Management Procedures

which are composed of their principles

National Disaster Management Plan

CABINET RESOLUTION



The cabinet has approved **National Disaster Prevention and Mitigation Plan 2010 – 2014** on dated **November 17, 2009**.

Types of Disaster

14 Types of Disaster

Flood and Landslide

Tropical Cyclones

Fire

Chemical and Hazmat.

Transport Hazard

Drought

Cold Spell

Forest Fire and Haze

Earthquake& Building Collapse

Tsunami

Human Epidemic

Plant Disease and Pest

Animal Epidemic and

Information and Technology Treat

4 Types of Security Treat

Sabotage

Mine and Land Mine Treat

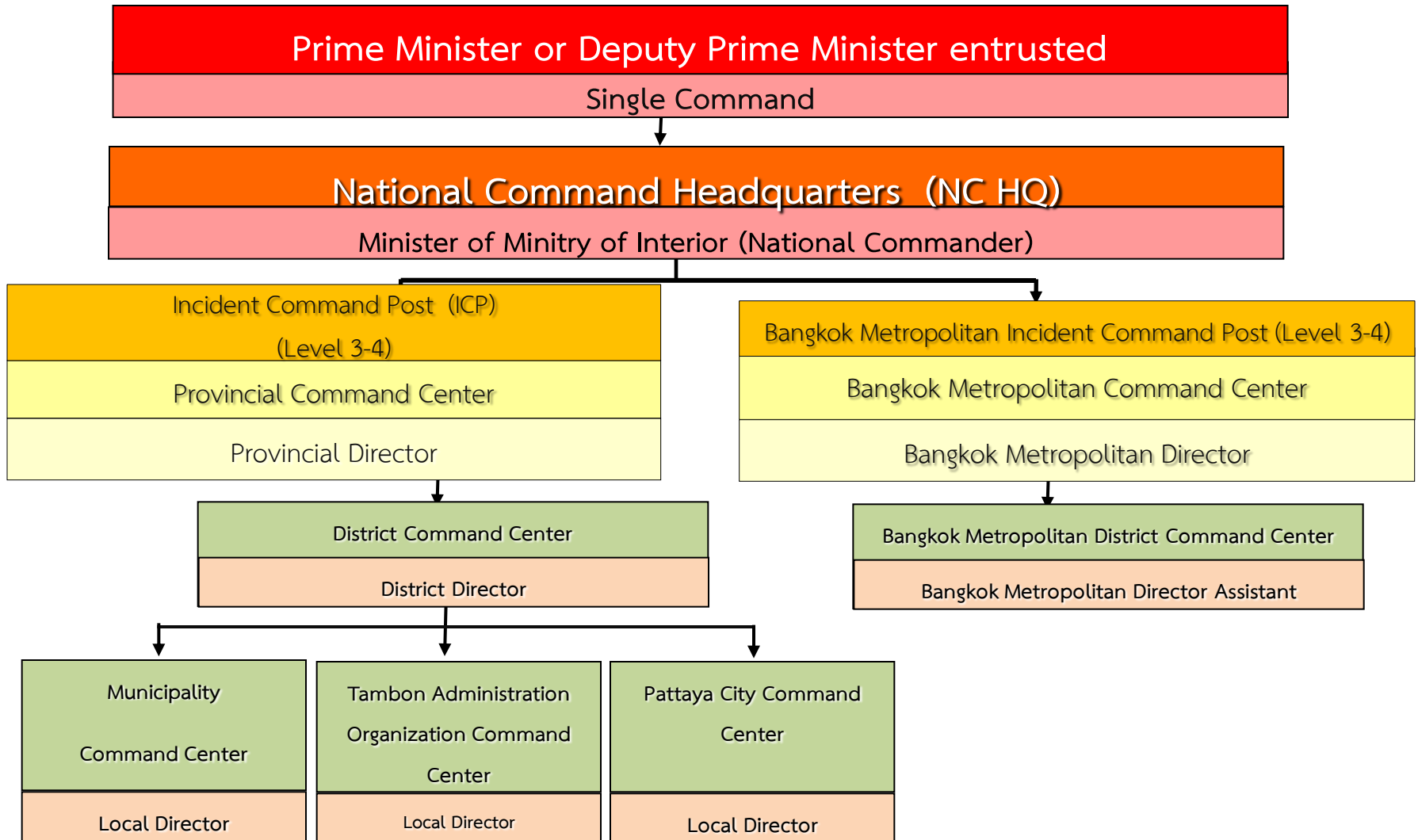
Air Treat

Protest and Riot

Level of Disaster Scale and Incident Commander

Level	Severity	Incident Commander
1	Small Scale Incident	Local Authority Org, Head such as Mayor, Local Chief Authority
2	Medium Scale Incident	Provincial Governor/ BMA Governor
3	Large Scale Incident	Central Commander / National Disaster Management Director
4	Extreme Scale Incident	The Prime Minister or the Designated Deputy Prime Minister

Extreme large – scale disaster (Level 4 Scale)





**DEPT. OF DISASTER PREVENTION AND MITIGATION
MINISTRY OF INTERIOR**







Thank you & Sawasdee

www.disaster.go.th

**Hotline
1784**