



IFRC STRATEGY ON VIOLENCE PREVENTION, MITIGATION AND RESPONSE FACT SHEET

WHY VIOLENCE IS A GREAT HUMANITARIAN CHALLENGE

Violence touches everyone – it is a global humanitarian catastrophe that affects all continents, countries and communities. The most prevalent types of violence are self-directed and interpersonal (child abuse, family violence, physical and sexual assault, gender-based, etc), which are the focus of the strategy.

Violence is rooted in many social determinants at the individual, family, community and social/cultural levels that interact with one another. The result is staggering, negative human, economic and community-development impacts. Each day thousands of people die or are injured by self-directed and interpersonal violence. The impact on economies is in the billions.

Violence is linked to all of the work the IFRC pursues including Humanitarian Diplomacy, Disaster Risk Reduction and Disaster Management, and Health whether in remote, rural or urban environments.



WHERE THE IFRC STANDS

Addressing violence is an essential element of recent key IFRC documents and frameworks.

- **Strategy 2020** strategic aim three: “Promote social inclusion and cultures of nonviolence and peace” includes an expected outcome to “lower levels of violence and more peaceful reconciliation of social differences.”
- **Declaration “Together for Humanity”** adopted at the 30th International Conference of the Red Cross Red Crescent
- **Youth Declaration** adopted at the 150th anniversary of the Red Cross Red Crescent in Solferino

Advancing the Red Cross Red Crescent Fundamental Principles and humanitarian values, we commit to work with people vulnerable to violence, with a particular focus on children and youth; to prevent, mitigate and respond to violence – locally and globally – through advocacy and promoting change in knowledge, mindsets, attitudes and behaviours in order to foster environments that respect human dignity and diversity and are caring, safe and peaceful.

Vision of the IFRC on Addressing Violence



ACTION: STRATEGIC DIRECTIONS TO ADDRESS VIOLENCE

STRATEGIC
AIM 1 ▶

SAVE LIVES, PROTECT LIVELIHOODS, AND STRENGTHEN
RECOVERY FROM DISASTERS AND CRISES

Integrate across project cycle, educate beneficiaries, build into communication strategies

STRATEGIC
AIM 2 ▶

ENABLE HEALTHY
AND SAFE LIVING

Include in vulnerability and capacity assessments, implement community-based programs, provide PSP support and link to environmental degradation

STRATEGIC
AIM 3 ▶

PROMOTE SOCIAL INCLUSION AND
A CULTURE OF NON-VIOLENCE AND PEACE

Apply Fundamental Principles and address root causes, promote dialogue and non-violence between communities, support programs for disadvantaged people

ENABLING
ACTION 1 ▶

BUILD STRONG NATIONAL RED CROSS
AND RED CRESCENT SOCIETIES

Develop protective systems within National Societies, Build capacity of Red Cross Red Crescent personnel, especially youth

ENABLING
ACTION 2 ▶

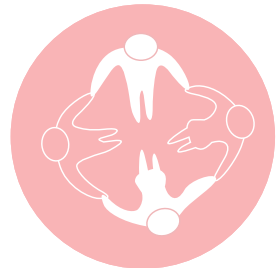
PURSUE HUMANITARIAN DIPLOMACY TO PREVENT AND
REDUCE VULNERABILITY IN A GLOBALIZED WORLD

Partner with public authorities, Raise IFRC voice at local, national, regional and international levels

ENABLING
ACTION 3 ▶

FUNCTION EFFECTIVELY
AS THE IFRC

Coordinate actions across the Red Cross Red Crescent



HOW TO LEARN MORE

Visit: www.ifrc.org / **Contact:** sandra.gutierrez@ifrc.org