



Information sharing on novel coronavirus (COVID-19)

MRCS's activities supported by the Red Cross & Red Crescent Movement partners in Myanmar

[Update] As per the announcement from the Ministry of Health and Sports (MoHS) at 23:45hr, 23 March 2020, two COVID-19 cases result confirmed, one from Hlegu Town, Yangon who came back from UK and one in Tetain, Chin State who came back from USA. For more information, please check updates [here](#).

#COVID19 Myanmar Red Cross Society (MRCS) activities at a glance



Awareness raising in Mon State

Objective

MRCS's COVID-19 response aims to reduce suffering, mortality and social impacts of the COVID-19 outbreak by preventing or slowing transmission and helping to ensure communities affected by the outbreak maintain access to basic social services and can support themselves in dignity.

Geographic areas covered by MRCS

All 17 Regions and States



Main activities of MRCS

In close collaboration with MoHS:

Risk Communication & Community Engagement | Information distribution | Trainings on Epidemic Control for volunteers | Border screening | Psychosocial support | Distribution of protective equipment and hand sanitizers | Referrals

MRCS's upcoming activities will reflect the latest development with newly confirmed cases and potential humanitarian needs that may arise, in close coordination with its partners.

Required funding: CHF 32 million globally

See our global appeal [here](#).



Partners of MRCS

MRCS has been in regular contact with all levels of Ministry of Health and Sports (MoHS) including Central Epidemic Unit (CEU), Health Literacy Promotion Unit (HLPU) of MoHS since the beginning of the outbreak. MRCS is supporting MoHS in carrying surveillance, screening, contact tracing capability, support to quarantine or self-isolation, home-based care, while MRCS Branches are collaborating with local MoHS.

MRCS continues to lead the Red Cross & Red Crescent Movement Task Force which convenes regularly to effectively and timely prepare for the fast-evolving situation.

Key contacts

Dr Nay Htet Lin	Joseph Muyambo
Deputy Director, Health Department	Programme Coordinator
Myanmar Red Cross Society	IFRC Myanmar Country Office
nayhtetlin@redcross.org.mm	joseph.muyambo@ifrc.org
+95 9 799 531 565	+95 9 450 719 453



Information sharing in Kachin State



Airport health screening in northern Shan State



Information sharing in Rakhine State

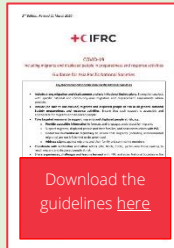


Setting up billboard in Tanintharyi Region

Leaving no one behind - Migrants

Many migrants have returned to Myanmar from the affected countries and they have higher risks of COVID-19. Also most of their livelihood have been interrupted at least temporarily. Some of them are also facing stigmatization. **It is important that no one and no migrant face stigma and blame for COVID-19.**

Migrants are one of MRCS's main target groups during COVID-19 outbreak.

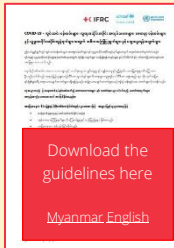


Red Cross Volunteers

MRCS's well-informed and committed Red Cross volunteers are supporting the communities in preparing for and protecting themselves during this outbreak. MRCS's volunteers have the access and trust that people are seeking and are part of **fourteen million Red Cross and Red Crescent volunteers in 192 countries**, connected to their local communities and playing a crucial role in efforts against COVID-19.

Engaging communities & reflecting feedbacks

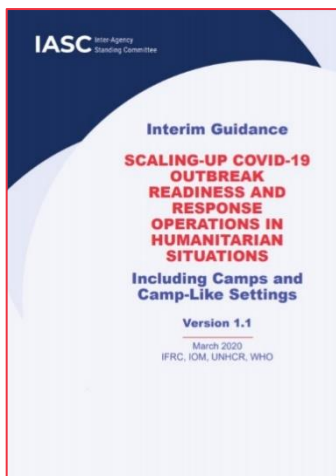
Risk Communication and Community Engagement (RCCE) is a powerful and effective tool enabling people to be better informed and share feedbacks through feedback mechanisms. MRCS field teams and volunteers have been trained on RCCE tools during recent trainings and will mainstream RCCE in COVID-19 preparedness for response operation.



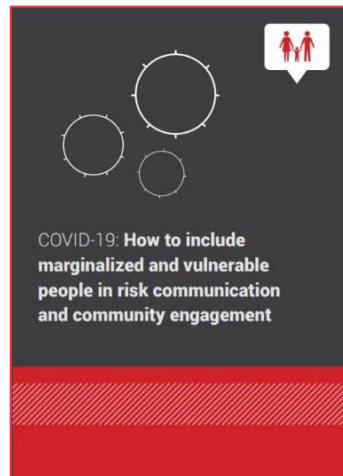
Red Cross & Red Crescent Worldwide

As a trusted partner and voice in this outbreak, the International Red Cross and Red Crescent Movement has an important role in taking action to keep people safe. We have long experience in preparing for and responding to disease outbreaks. Our global aim is to prevent or slow the transmission of COVID-19, help communities already affected by the outbreak to maintain access to basic social services, and reduce the economic, social and psychological impact on people.

Useful guidance note



This guide addresses specific needs and considerations for COVID-19 outbreak readiness and response operations incl. in camps and camp-like settings. Read more [here](#).



This guide provides advice on how to include marginalized and vulnerable people in risk communication and community engagement during COVID-19 operations. Read more [here](#).

IFRC revised emergency appeal highlights

On 11 February 2020, IFRC [launched](#) its revised emergency appeal for COVID-19 outbreak response. This Emergency Appeal seeks a revised **total of CHF 32 million** to enable the IFRC to support its membership to deliver assistance and support to communities affected or at risk of being affected by COVID-19. Assistance will be tailored to each country depending on its preparedness and response, as well as the vulnerability of particular groups of people in the community. **Currently CHF 5,112,607 is received.** (Source: [IFRC Go](#))



Private sector engagement

MRCS has received financial and in-kind donation from local companies and is providing information sessions on COVID-19 to private sector partners upon requests. American Red Cross is supporting MRCS in liaising with American corporate donors.

Tackling social stigma on COVID-19: How we communicate about COVID-19 is critical in supporting people to take effective action to help combat the disease and to avoid fueling fear and stigma. An environment needs to be created in which the disease and its impact can be discussed and addressed openly, honestly and effectively.

Learn more about [how to prevent and address social stigma](#)

Resources

[Daily MoHS update on COVID-19](#)

[Daily MIMU update on COVID-19](#)

[International SOS Clinic Yangon – FAQ](#)

[IFRC COVID-19 additional graphics](#)

For previous versions of this weekly COVID-19 update by MRCS and Red Cross & Red Cross Movement partners, please visit [here](#).