

SAFER ACCESS

Increasing acceptance, security and access to people and communities in need

PRACTICAL RESOURCE PACK

What is the Safer Access Framework (SAF)?

Do you know the gaps, barriers, risks and challenges affecting your National Society's acceptance, security and access to people and communities in need and how you will overcome them?



SAF features

- ▶ Operational approach towards NS development
- ▶ Context-specific
- ▶ Pragmatic
- ▶ Structured, measurable



In what contexts does the SAF apply?

The SAF applies in all situations, but particularly in sensitive and insecure contexts, including armed conflict and internal disturbances and tensions.



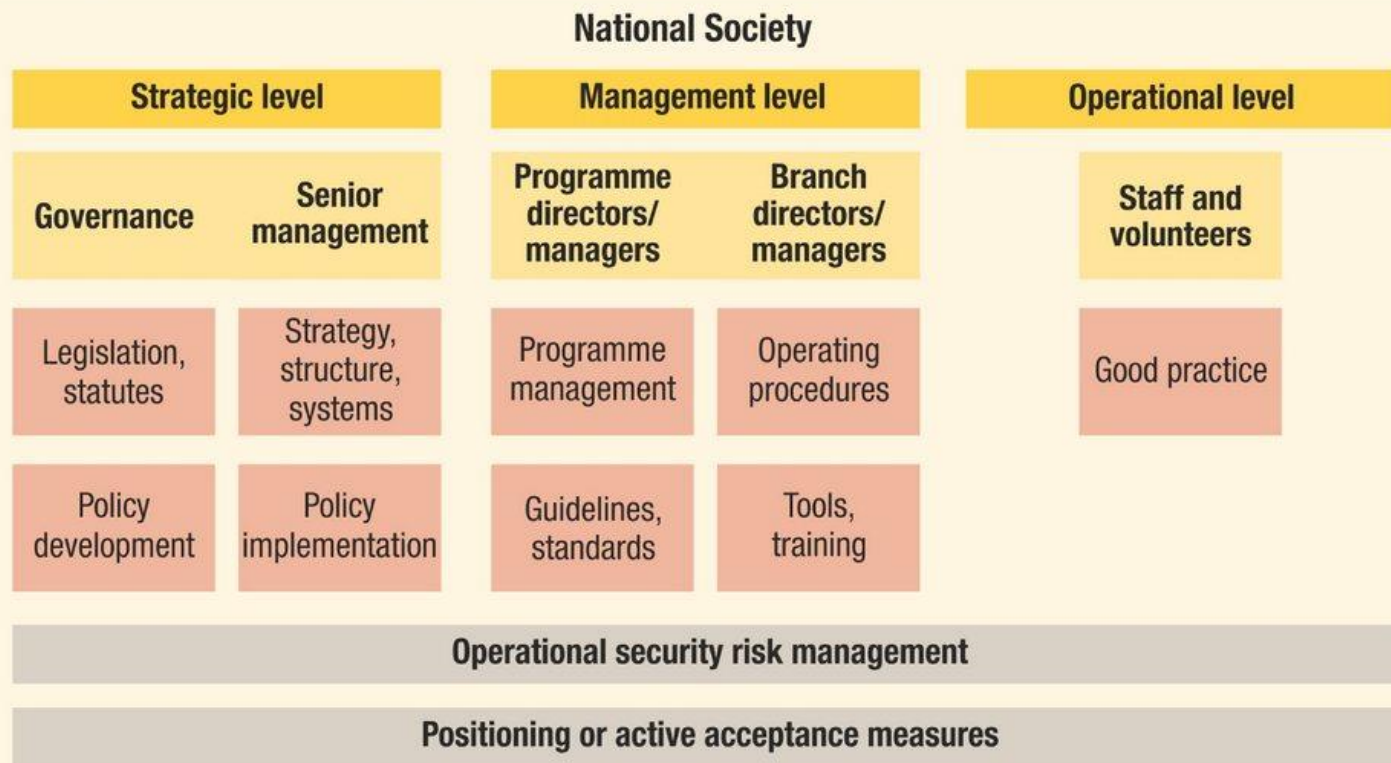
Who it is for

WHY THE SAFER ACCESS FRAMEWORK IS IMPORTANT FOR ALL NATIONAL SOCIETIES

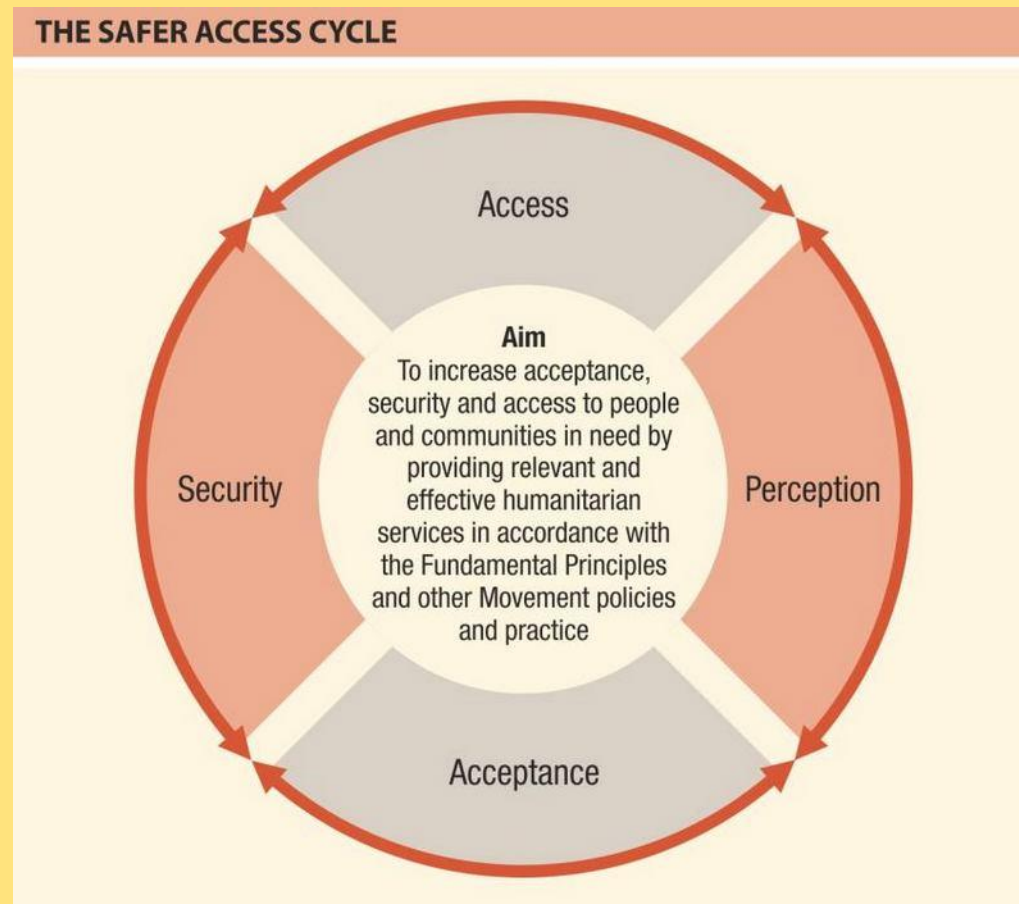
- 1** Increase your ability to address the humanitarian needs of more people
- 2** Prevent, reduce and avoid security incidents which cause harm to your staff and volunteers
- 3** Better meet the challenges of today's complicated and evolving humanitarian environments
- 4** Fulfil your mandate and roles in sensitive and insecure contexts
- 5** Adopt a more structured approach to increasing your security and access

Areas in which the SAF is most relevant

TARGETED APPLICATION ACCORDING TO RESPONSIBILITIES AND ACCOUNTABILITY



The cycle underpinning the SAF



“How to use the Fundamental Principles is to live them”

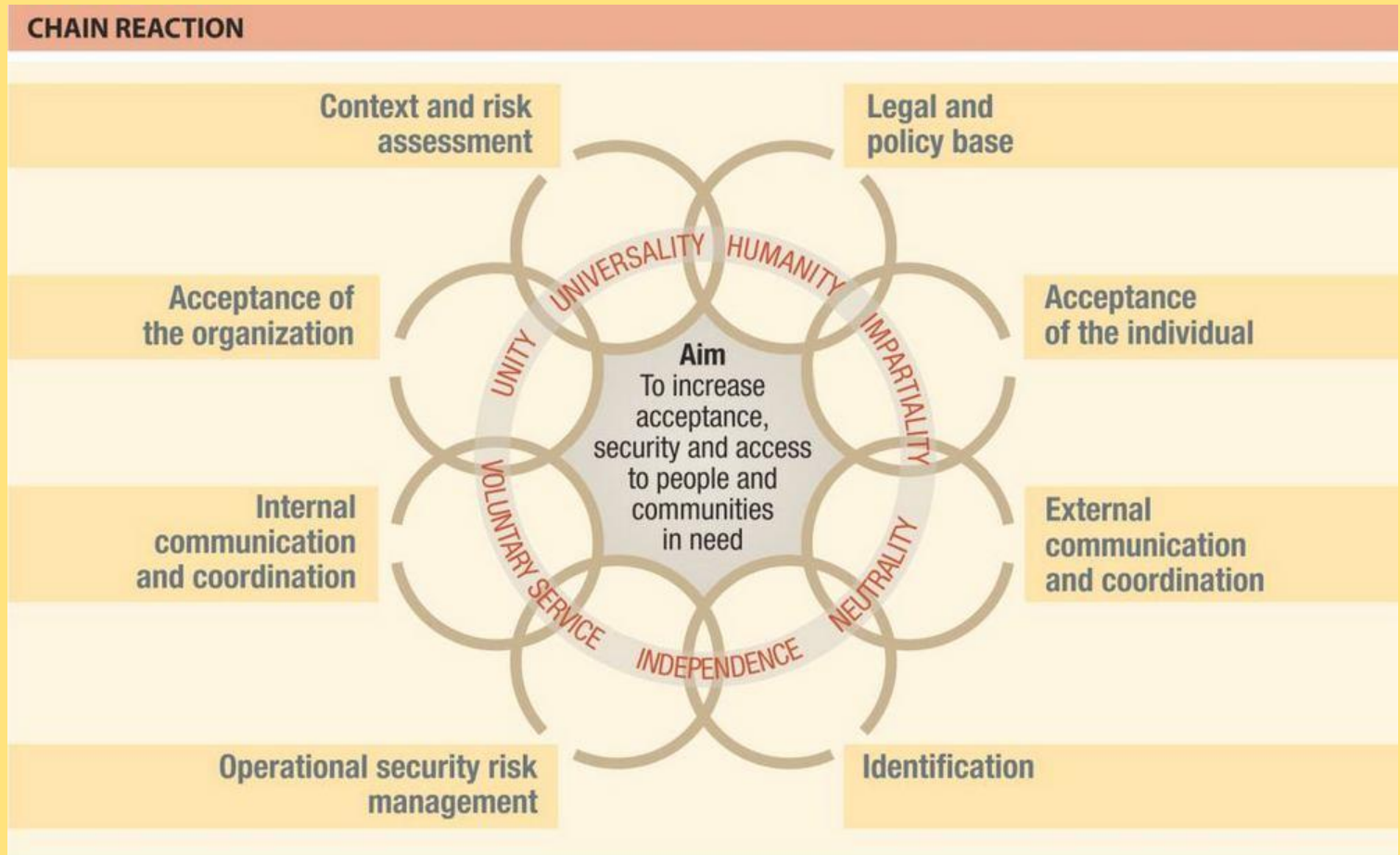
THE FUNDAMENTAL PRINCIPLES INSPIRE AND UNITE THE WHOLE MOVEMENT



The 8 elements of the SAF

THE EIGHT ELEMENTS					
I		Context and risk assessment	V		Identification
II		Legal and policy base	VI		Internal communication and coordination
III		Acceptance of the organization	VII		External communication and coordination
IV		Acceptance of the individual	VIII		Operational security risk management

How the elements link together



A structured approach to application of the SAF



TAKE ACTION AND INTEGRATE

POSSIBLE AREAS FOR THE INTEGRATION OF OUTCOMES

Policy **Guidelines** LEGISLATION
STATUTES Support Services
Strategy **VISION** Tools and Training
Programmes *Systems*

SAFER ACCESS

A GUIDE FOR ALL NATIONAL SOCIETIES



PRACTICAL RESOURCE PACK

SAFER ACCESS IN ACTION

CASE STUDY: AFGHANISTAN



INTRODUCTION

PRACTICAL RESOURCE PACK



INTRODUCTION



MAGEN DAVID ADOM IN ISRAEL

OUR SELECTED EXPERIENCE

PRACTICAL RESOURCE PACK

Our mission

The ongoing armed conflict in the Middle East has caused a severe situation for Magen David Adom (MDA), Israel's national society, which has striven to its utmost capacity to ensure the safety of our staff and volunteers.

MDA's crucial national emergency medical services, which help the authorities, local staff members and expert international colleagues in the face of the emergency, require resources such as infrastructure, tools of emergency in medical areas and an authority to manage and deliver medicines. The infrastructure concerned with the armed forces medical services during conflicts.

Since the Israeli-Hezbollah conflict, there have been changes in the response to attacks during an armed conflict, our national society is required to coordinate closely with the armed forces command, government, air support and national organizations to fulfil its mission as a challenge.

Another challenge for us is the individual's targeting of infrastructure, facilities, staff and others both within and for general accessibility to the service.

There are acceptance, security and access challenges.

As demonstrated during the war with Lebanon in 2006 and the ongoing conflict in the surroundings of the Gaza Strip, the infrastructure is the target of rockets, missiles, snipers and mortar attacks. These are potential weapons which threaten the very place where they are. After further staff and volunteer are also exposed to the challenge by attacks, our mission is still not to be by a factor of 2. The

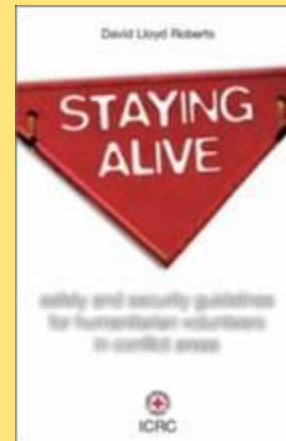


Emergency services use a 10-minute response time.

number of 100, when responding to emergency, personnel require that they do not respond in

Another example is attack on personnel on site to save working infrastructure, such as a new portable mobile facility. This attack was limited with a guard on duty, which is targeting the people coming to the facility of the

The attack forces come first after other national attacks. This has shown that the general emergency response is usually, not the area level of care as any other security on site, which has been shown when they do the general role in the team facilities. This is a role that is the emergency fundamental people ability to apply them.



SAFER ACCESS

1. The first response is to ensure that working in a conflict environment is safe. Working in a conflict environment is not a simple task. It is a complex task. It is a task that requires a high level of skill and experience. It is a task that requires a high level of commitment and dedication. It is a task that requires a high level of courage and bravery. It is a task that requires a high level of resilience and endurance. It is a task that requires a high level of flexibility and adaptability. It is a task that requires a high level of communication and teamwork. It is a task that requires a high level of leadership and management. It is a task that requires a high level of innovation and creativity. It is a task that requires a high level of passion and dedication. It is a task that requires a high level of integrity and honesty. It is a task that requires a high level of respect and dignity. It is a task that requires a high level of compassion and empathy. It is a task that requires a high level of understanding and tolerance. It is a task that requires a high level of patience and perseverance. It is a task that requires a high level of focus and concentration. It is a task that requires a high level of energy and enthusiasm. It is a task that requires a high level of determination and resolve. It is a task that requires a high level of courage and bravery. It is a task that requires a high level of resilience and endurance. It is a task that requires a high level of flexibility and adaptability. It is a task that requires a high level of communication and teamwork. It is a task that requires a high level of leadership and management. It is a task that requires a high level of innovation and creativity. It is a task that requires a high level of passion and dedication. It is a task that requires a high level of integrity and honesty. It is a task that requires a high level of respect and dignity. It is a task that requires a high level of compassion and empathy. It is a task that requires a high level of understanding and tolerance. It is a task that requires a high level of patience and perseverance. It is a task that requires a high level of focus and concentration. It is a task that requires a high level of energy and enthusiasm. It is a task that requires a high level of determination and resolve.

2. The second response is to ensure that working in a conflict environment is safe. Working in a conflict environment is not a simple task. It is a complex task. It is a task that requires a high level of skill and experience. It is a task that requires a high level of commitment and dedication. It is a task that requires a high level of courage and bravery. It is a task that requires a high level of resilience and endurance. It is a task that requires a high level of flexibility and adaptability. It is a task that requires a high level of communication and teamwork. It is a task that requires a high level of leadership and management. It is a task that requires a high level of innovation and creativity. It is a task that requires a high level of passion and dedication. It is a task that requires a high level of integrity and honesty. It is a task that requires a high level of respect and dignity. It is a task that requires a high level of compassion and empathy. It is a task that requires a high level of understanding and tolerance. It is a task that requires a high level of patience and perseverance. It is a task that requires a high level of focus and concentration. It is a task that requires a high level of energy and enthusiasm. It is a task that requires a high level of determination and resolve.

3. The third response is to ensure that working in a conflict environment is safe. Working in a conflict environment is not a simple task. It is a complex task. It is a task that requires a high level of skill and experience. It is a task that requires a high level of commitment and dedication. It is a task that requires a high level of courage and bravery. It is a task that requires a high level of resilience and endurance. It is a task that requires a high level of flexibility and adaptability. It is a task that requires a high level of communication and teamwork. It is a task that requires a high level of leadership and management. It is a task that requires a high level of innovation and creativity. It is a task that requires a high level of passion and dedication. It is a task that requires a high level of integrity and honesty. It is a task that requires a high level of respect and dignity. It is a task that requires a high level of compassion and empathy. It is a task that requires a high level of understanding and tolerance. It is a task that requires a high level of patience and perseverance. It is a task that requires a high level of focus and concentration. It is a task that requires a high level of energy and enthusiasm. It is a task that requires a high level of determination and resolve.

4. The fourth response is to ensure that working in a conflict environment is safe. Working in a conflict environment is not a simple task. It is a complex task. It is a task that requires a high level of skill and experience. It is a task that requires a high level of commitment and dedication. It is a task that requires a high level of courage and bravery. It is a task that requires a high level of resilience and endurance. It is a task that requires a high level of flexibility and adaptability. It is a task that requires a high level of communication and teamwork. It is a task that requires a high level of leadership and management. It is a task that requires a high level of innovation and creativity. It is a task that requires a high level of passion and dedication. It is a task that requires a high level of integrity and honesty. It is a task that requires a high level of respect and dignity. It is a task that requires a high level of compassion and empathy. It is a task that requires a high level of understanding and tolerance. It is a task that requires a high level of patience and perseverance. It is a task that requires a high level of focus and concentration. It is a task that requires a high level of energy and enthusiasm. It is a task that requires a high level of determination and resolve.

5. The fifth response is to ensure that working in a conflict environment is safe. Working in a conflict environment is not a simple task. It is a complex task. It is a task that requires a high level of skill and experience. It is a task that requires a high level of commitment and dedication. It is a task that requires a high level of courage and bravery. It is a task that requires a high level of resilience and endurance. It is a task that requires a high level of flexibility and adaptability. It is a task that requires a high level of communication and teamwork. It is a task that requires a high level of leadership and management. It is a task that requires a high level of innovation and creativity. It is a task that requires a high level of passion and dedication. It is a task that requires a high level of integrity and honesty. It is a task that requires a high level of respect and dignity. It is a task that requires a high level of compassion and empathy. It is a task that requires a high level of understanding and tolerance. It is a task that requires a high level of patience and perseverance. It is a task that requires a high level of focus and concentration. It is a task that requires a high level of energy and enthusiasm. It is a task that requires a high level of determination and resolve.



Produced in cooperation with National Red Cross and Red Crescent Societies





SAFER ACCESS FRAMEWORK QUICK REFERENCE CHART

Safe Access **Challenges and barriers**

The underlying purpose of each element is to increase acceptance and security in order to increase access to those in need in sensitive and volatile contexts, including areas with low formal structures and resources.

To meet Safe Access elements, areas have been identified where action might be required to address the gaps, barriers, risks and challenges in acceptance, security and access.

In the Assessment components, an assessment is a joint exercise. The National Society closely coordinates its preparation and response activities with those of international and bilateral coordination partners and other stakeholders in order to maximize the humanitarian impact and to ensure complementarity.

I. Context and risk assessment

1.1 Understand the interlink and differences between preparing for and responding to sensitive and volatile contexts within low formal structures.

1.2 Understand and analyse emerging political, social, cultural and economic trends that could influence humanitarian action and contribute to gaps, barriers and risks and respond accordingly.

1.3 Identify and monitor a continuously evolving context, assessment a better understanding of context and needs.

1.4 Conduct an ongoing risk assessment.

1.5 Assess and identify National Society capacity and ability to manage sensitive sites.

1.6 Identify and address a challenging site which leads to community tensions and deteriorates trust, specific and targeted response.

II. Engage policy level

2.1 Know the relevant provisions of international humanitarian law and domestic legislation in order to determine how best to carry out the National Society mandate.

2.2 Develop and strengthen advocacy, negotiation, mediation, political, representation and other to influence the National Society mandate to respond in sensitive contexts.

2.3 Promote a common understanding among relevant international National Society networks, to coordinate the Response, to be coordinated to act in coordination with the humanitarian system.

2.4 Know and respect the legal basis and jurisdiction of the National Society in sensitive and volatile contexts.

2.5 Develop and strengthen negotiation and mediation skills.

2.6 Develop and strengthen negotiation and mediation skills.

2.7 Know and understand the role of the National Society in sensitive and volatile contexts.

2.8 Know and understand the role of the National Society in sensitive and volatile contexts.

2.9 Know and understand the role of the National Society in sensitive and volatile contexts.

2.10 Know and understand the role of the National Society in sensitive and volatile contexts.

2.11 Know and understand the role of the National Society in sensitive and volatile contexts.

III. Acceptance of the operation

3.1 Develop and provide relevant humanitarian programme and all components throughout the country.

3.2 Identify and respond to emerging security and access challenges.

3.3 Develop and strengthen advocacy, negotiation, mediation, political, representation and other to influence the National Society mandate to respond in sensitive contexts.

3.4 Develop and strengthen advocacy, negotiation, mediation, political, representation and other to influence the National Society mandate to respond in sensitive contexts.

3.5 Develop and strengthen advocacy, negotiation, mediation, political, representation and other to influence the National Society mandate to respond in sensitive contexts.

3.6 Develop and strengthen advocacy, negotiation, mediation, political, representation and other to influence the National Society mandate to respond in sensitive contexts.

3.7 Develop and strengthen advocacy, negotiation, mediation, political, representation and other to influence the National Society mandate to respond in sensitive contexts.


3.8 Develop and strengthen advocacy, negotiation, mediation, political, representation and other to influence the National Society mandate to respond in sensitive contexts.

3.9 Develop and strengthen advocacy, negotiation, mediation, political, representation and other to influence the National Society mandate to respond in sensitive contexts.

3.10 Develop and strengthen advocacy, negotiation, mediation, political, representation and other to influence the National Society mandate to respond in sensitive contexts.

3.11 Develop and strengthen advocacy, negotiation, mediation, political, representation and other to influence the National Society mandate to respond in sensitive contexts.

- SAF Chart
- SAF Assessment and Planning Tool
- SAF Benchmarking and Monitoring Tool
- Facilitator's Guide
- PowerPoint presentation
- Graphics package



Safer Access Assessment and Planning Tool

The underlying purpose of each element is to increase acceptance and security in order to increase access to those in need in sensitive and volatile contexts, including armed conflict and internal displacement and tensions. This tool is available online at www.icrc.org/saferaccess.

Safer Access element	Actions and measures	Identified gaps, barriers, risks and challenges	Priority 1-3	Current benchmark level (A-E)	Desired benchmark level (A-E)	Actions required	Responsible	Timeline
I. Context and risk assessment National Societies have a clear understanding of the interlink political, social, cultural and economic aspects of the evolving operational environment and the relevant risks, which forms the basis for preventing and managing those risks.	1.1 Understand interlink and differences between preparing for and responding to sensitive and volatile contexts within low formal structures (including for and responding in sensitive and volatile contexts).							
	1.2 Explore and analyse emerging political, social, cultural and economic trends that could influence humanitarian action and use knowledge to guide preparedness and response.							

Version 1 October 2013 11 Page





Strength and greater reach through Movement coordination