

ACE Programme
RCRC Induction
Jakarta – 20-24
August 2018

Introduction to IFRC Framework and Roadmap for Community Resilience...

Jakarta, 20 August 2018

Herve Gazeau
DRR Manager, IFRC

What is a resilient community?

A resilient community...



The IFRC defines resilience as, “the ability of individuals, communities, organizations or countries exposed to disasters, crises and underlying vulnerabilities to anticipate, prepare for, reduce the impact of, cope with and recover from the effects of shocks and stresses without compromising their long-term prospects.”

A resilient community

... is knowledgeable, healthy and can meet its basic needs



A resilient community

... is socially cohesive



A resilient community

... has well-maintained and accessible infrastructures and services



A resilient community

... has economic
opportunities



A resilience community

... can manage its natural assets



A resilient community

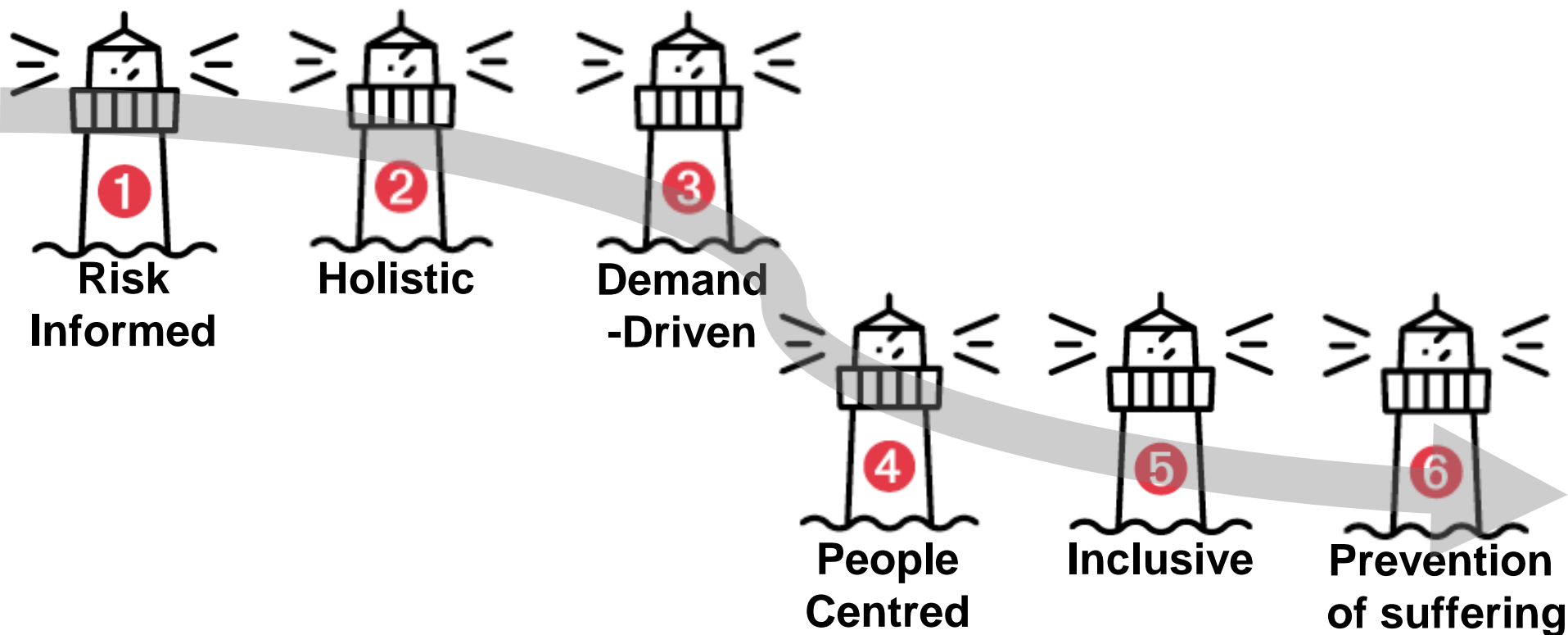
... is connected



Short brainstorming

- Think of a community in ASEAN countries...
- In groups of 3 or 4 colleagues for each characteristic
- Identify as many elements of vulnerability (**red**) and capacity (**green**) as you can related to your characteristic
- 1 idea = 1 post-it

6 Landmarks for community resilience



Rethinking RCRC services



accompany



enable



connect

ACE Programme
RCRC Induction
Jakarta – 20-24
August 2018

Community based programming



VCA as an integrated approach for community resilience

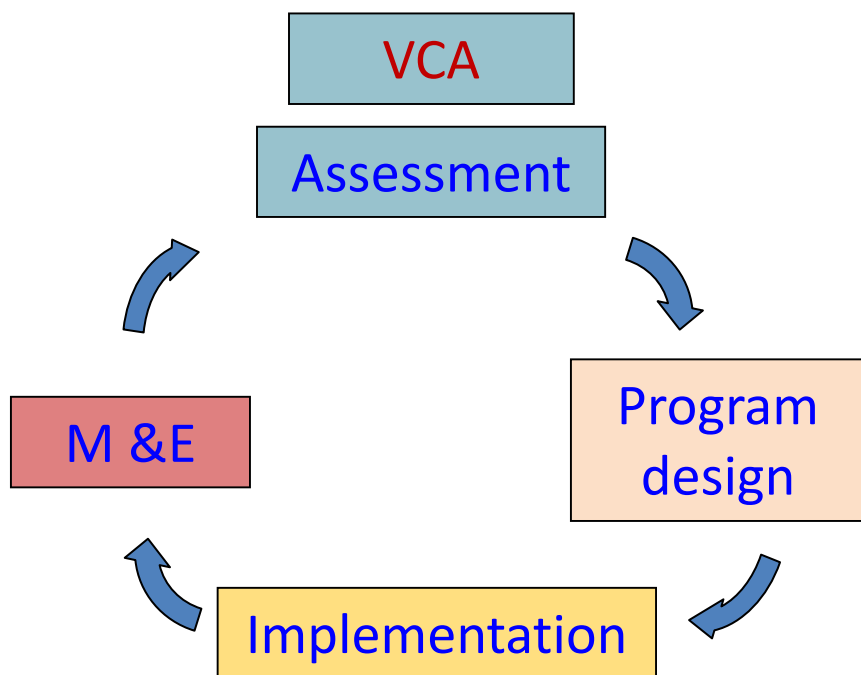
- VCA is a methodology for investigation
- It is a means of gathering information through a participative way
- Its purpose is to increase community's awareness of risks and help them to plan activities for reducing vulnerability and increasing capacities

“Before, we used to do things for people. With the VCA, we do things with the people. They are fully engaged in the investigation, and are full participants in creating the solutions” National Society informant

What VCA is / is NOT

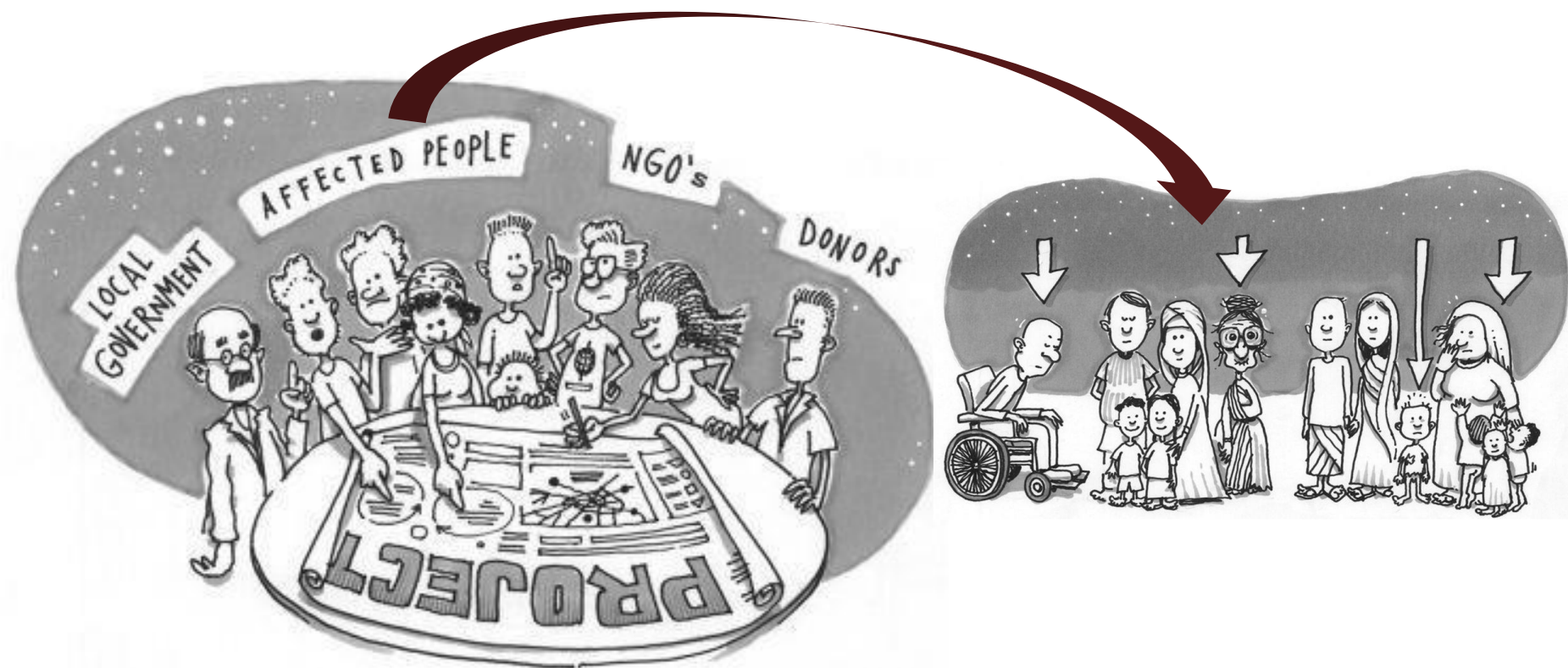
VCA is	VCA is not
A holistic / integrated / comprehensive approach looking at every risk	A tool only for DM / DRR programmes
A process managed from within the community	A process managed by the NS staff members / volunteers
A long-term approach for community resilience	A project-based activity
A part or step of a longer process led by the community	An assessment only

The VCA in a community-based programming cycle



- The VCA is an **essential step** of community-based initiatives by NSs.
- It is a **toolbox** to be adapted to the country context and the realities in the communities

Transparency and communications



INFORM: Provide timely and accurate information to affected people so they can make informed decisions

Participation and involvement



LISTEN: Taking the time to ask people what change they want to see

Feedback and complaints



RESPOND: Tracking changes - make information flow 2 ways

Monitoring, evaluation and learning



CHECK HOW WE ARE DOING: Using feedback to improve project impact