



Palang  
Merah  
Indonesia

# PMI Preparedness and Responses, from Local to National





# Comparison between Indonesia & Amerika





## Comparison between Indonesia & Europe



# Covering communities at risk



Palang  
Merah  
Indonesia



- The total area of 5.2 million km<sup>2</sup> , 1.9 million km<sup>2</sup> onshore and 3.3 million km<sup>2</sup> of ocean
- 17,583 islands, and 3 time zone.
- Distance from the west to the east around 5110 km
- More than 5800 rivers, 500 major rivers and 30% of which passes through densely populated areas
- 500 volcanoes, 128 active and very active

# Disaster Management Cycle



Palang  
Merah  
Indonesia



- We consider the ***implications of relief assistance*** after the disaster response phase is over
- ***We Promote “recovery”*** not only to get back to normal but to build back better & reduce future risks
- ***We focus on building community resilience in order*** to anticipate and manage potential disasters



# Philosophy and Goal of DM

## Philosophy of DM:

1. Understand the risk
2. Reduce peoples vulnerability from the hazard
3. Support adaptation and the ability to live with risk



## Goal of DM:

1. Pre Disaster → *Reduce Risk and be Prepared.*
2. Disaster Response → *Save More Lives.*
3. Recovery → *Build Back Better.*

# Disaster Management Framework



Palang  
Merah  
Indonesia

**Expected Outcome : Safer and resilient community**

## Strategic Objectives :

**Policy  
Development**

**Increase networking  
and partnership**

**Increase Resource  
Development**

**Increase capacity  
and performance**

### Disaster preparedness

- VCA
- Database and Mapping
- CBEWS
- Contingency Plan
- DM command post
- Emergency response preparedness
- Community awareness
- Disaster Mitigation
- and climate change adaptation
- Education & training, simulation

### Emergency response

- Satgana
- CBAT
- Logistics
- Standard Equipment
- Relief distribution
- Contingency Fund
- DMIS
- Emergency Post Command

### Disaster Recovery

- Transitional shelters
- Water and sanitation
- Health promotion
- Medical Action Team
- Livelihood
- PSP
- RFL

### Sector-based programming to build across the disaster management

#### spectrum :

- Organizational Development
- Health and Social Service
- Volunteer Management
- Resource Development & Image Building

## Cross Cutting Issue

**Risk  
Analysis**

**CBHFA  
Program**

**ICBRR  
Program**

**DP in  
School  
Program**

**Advocacy,  
Education &  
Promotion**

**Capacity  
Building**

**Partnership &  
networking**

**Gender and  
vulnerable  
groups  
sensitivity**



# Disaster Preparedness

- Strengthening PMI's **HUMAN RESOURCES** capacity.
- Strengthening and empowering **COMMUNITY** capacity
- Strengthening PMI's **DISASTER RESPONSE AND RECOVERY** capacity



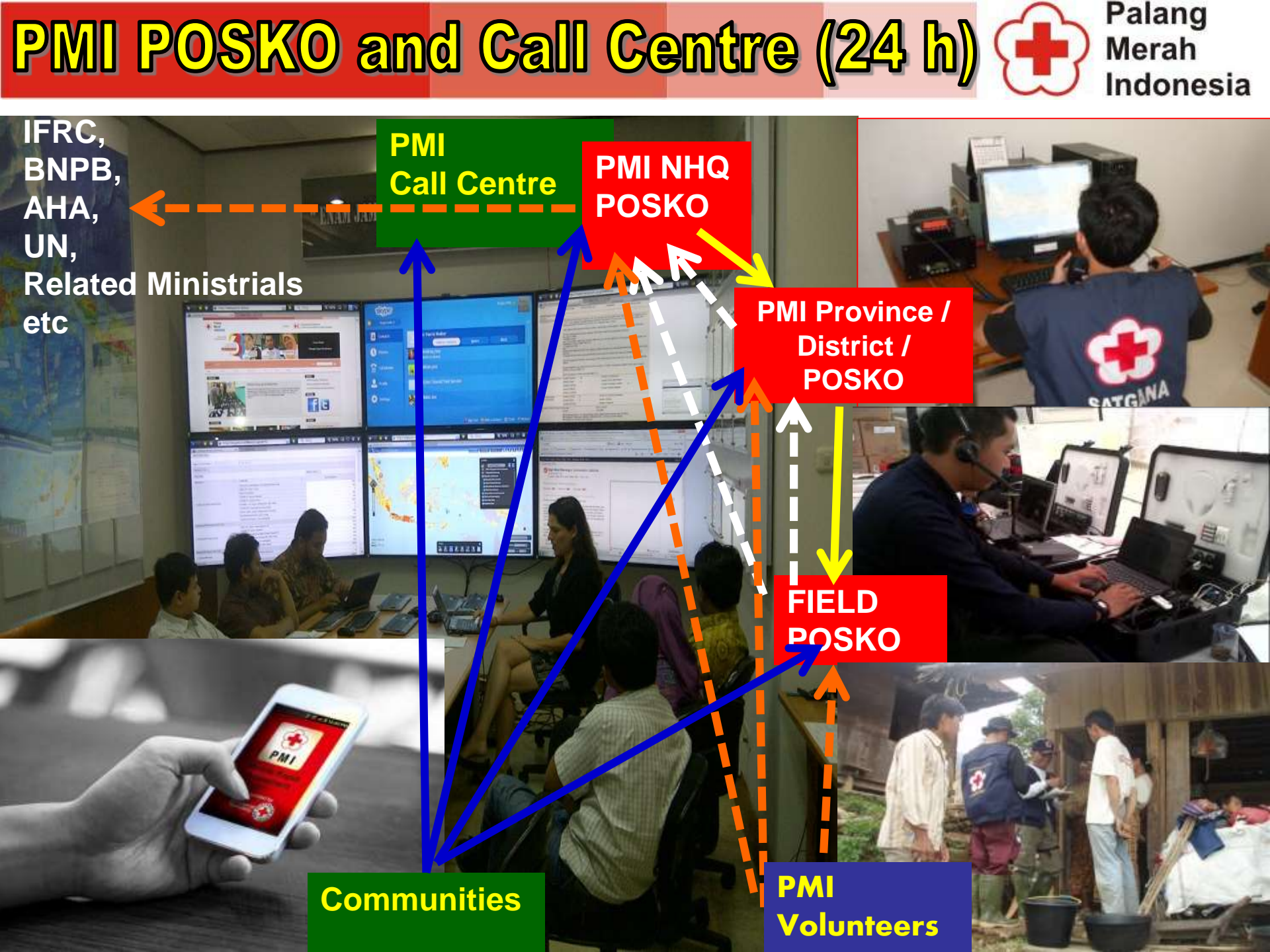


Palang  
Merah  
Indonesia

**What is the most important thing in the  
Redcross / RedCrescent  
Volunteer, Volunteer, Volunteer.....**









# Zoning Operation & Logistic Decentralisation



Regional (Padang , Serang, Semarang, Surabaya, Banjarmasin dan Surabaya)



Watsan Warehouse (Bandung – Sentral, Padang and Makassar)





# Tools & Equipment

## Logistic zone equipped :

~ Relief items minimum stock  
for 5000 HH

~2 Ambulance

~2 Truck

~2 unit WTU

~2 Water Tank

~2 Hagloon

~1 Field Hospital (50 bed)

~2 Rubbhall

~2 IT & Com Box

~2 Field kitchen set

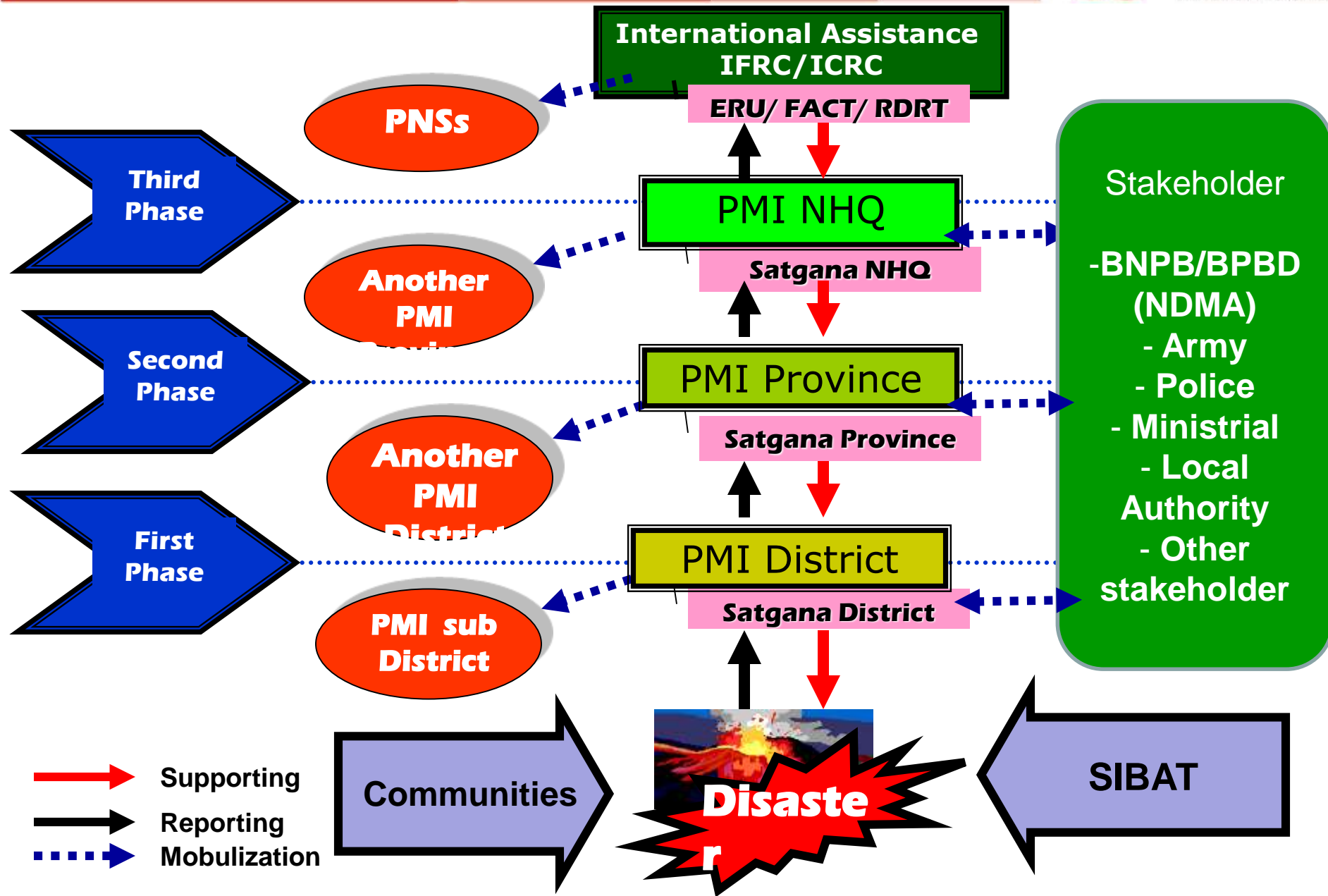
- Helicopter based in Jakarta & Makassar

- Cargo Plan (BAE) Collaborating with Private  
Sector based in Jakarta





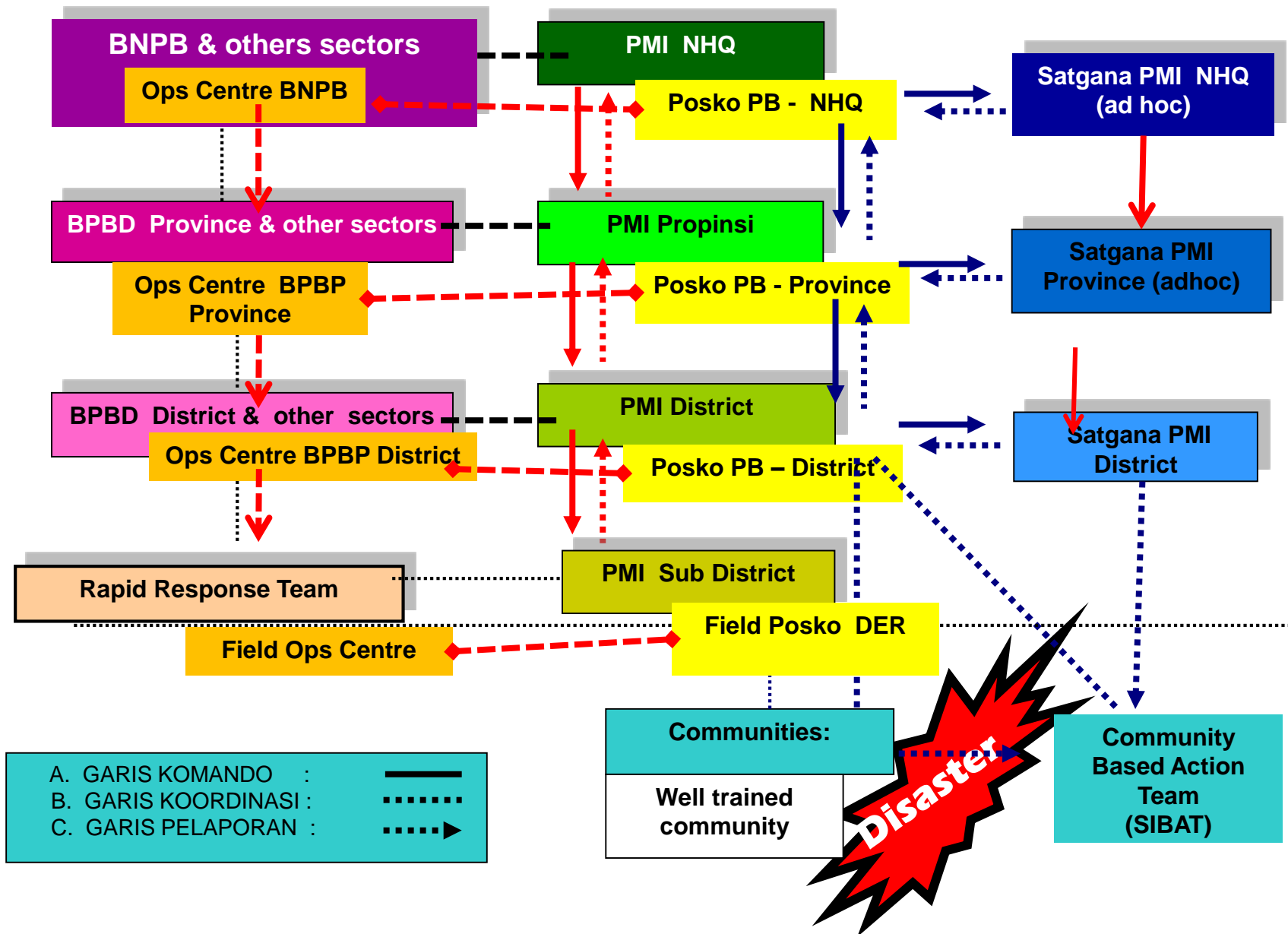
# Phase of Emergency Assistant



# Coordination Mechanism



Palang  
Merah  
Indonesia





Palang  
Merah  
Indonesia

Response

# GUNUNG AGUNG

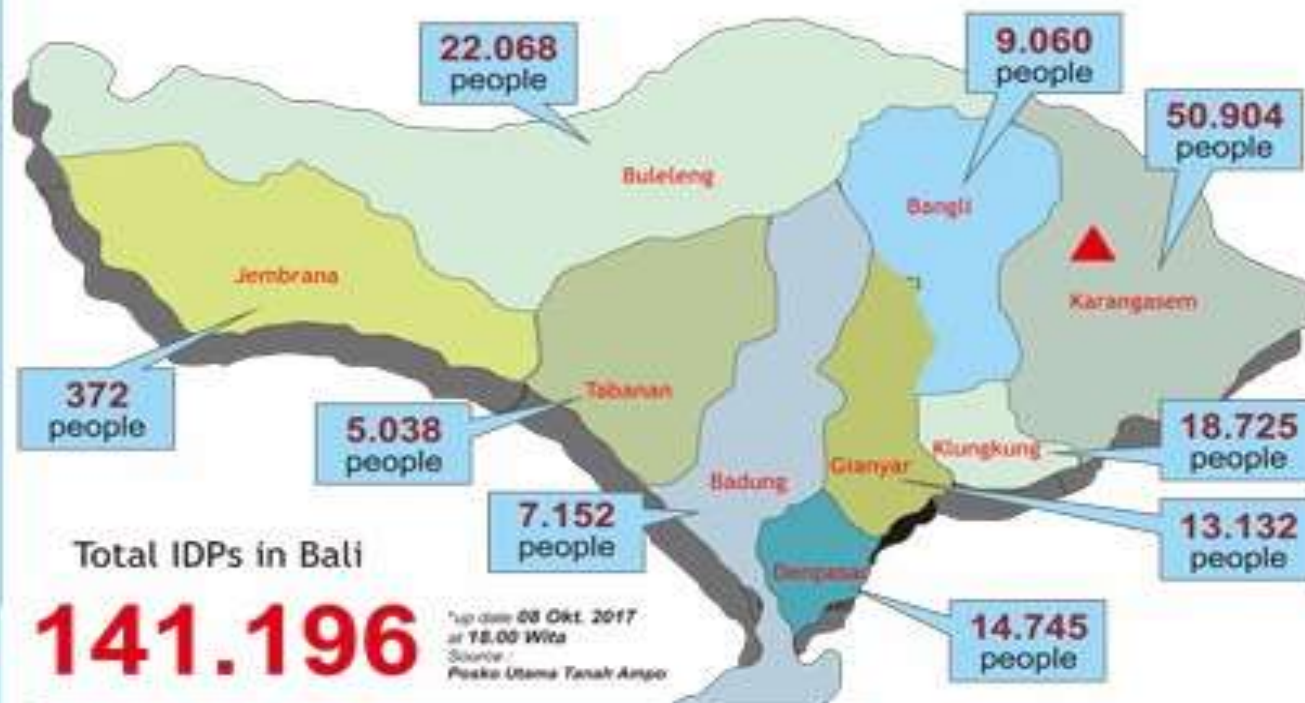
## Indonesian Red Cross (PMI) Bali Province Activities

1. Mobilize the volunteers to Sangkanung on stand by for evacuation need.
2. Collecting and organising logistic data at Posko Tanah Ampo.
3. Marking MCK for IDPs at Gunung and Pesaban Village - Karang Asem.
4. Carry out activities to implementing integrated shelter in Pesaban and Tenganan Village.
5. Carry out psychosocial support activity at Sangkan Gunung Village, Karangasem.
6. Carry out health service and promotion at Pengringsingan, Tenganan, Pesaban and Gunung Village, Karang Asem.
7. Operating the post in Tanah Ampo - Karangasem.
8. Assesment location (banjar) as an alternative place of IDPs
9. Intersectoral Coordination Meeting regarding anticipation to the eruption.



for more information :  
Posko PMI Tanah Ampo  
PMI 0821 7463 6468

Agung volcano status has been increase from Alert (Level III) to Warning (Level IV) by PVMBG started 22/9/2017 at 20.30 Bali time. The movement of internal displace persons (IDPs) spread to various locations in Bali.



PMI Channeling Community Members Donation  
in Bali through **Bank Mandiri**  
Ac. Nr. 145-00-0467434-3 or **BPD Bali**  
Ac. Nr. 011.011.00053-9 an. **PMI Daerah Bali**

#SiagaGunungAgung  
#PMISiapBantu  
#samasamabantusesama

### Vehicles Operate

Water Tank Truck	: 6 unit
Double Cabin Truck	: 3 unit
Ambulance	: 13 unit
Operational Car	: 15 unit
DM Unit Car	: 1 unit

### Personel

Board	: 10 orang
Staff	: 66 orang
Volunteers	: 146 orang

### Needs

- Food	- Mat
- Clean Water	- Hygiene Kit
- Tarpaulin	- Water Sanitation
- Blanket	- Medicines
- Masker N95	- Baby Kit





## Latest field reports

Date	Country	Disaster	Summary
08 Oct 17	<a href="#">Kenya</a>	Epidemic	<a href="#">Malaria Outbreak in Kenya</a>
06 Oct 17	<a href="#">El Salvador</a>	Floods	<a href="#">afectación por tormenta</a>
06 Oct 17	<a href="#">Indonesia</a>	Subsidence (Wet)	<a href="#">Cianjur Subsidence</a>
06 Oct 17	<a href="#">Nicaragua</a>	Tropical cyclone	<a href="#">Tormenta Tropical Nate</a>
05 Oct 17	<a href="#">Honduras</a>	Floods	<a href="#">Afectación por fuertes lluvia...</a>
05 Oct 17	<a href="#">Guatemala</a>	Floods	<a href="#">Daños por las Lluvias</a>
05 Oct 17	<a href="#">Panama</a>	Floods	<a href="#">Lluvias y fuertes vientos</a>






[> view all field reports](#)

## Latest Alerts



ERU A. Dominica, Hurricane Maria (second rotation):

## Current operations

-  [Bangladesh - Population Movement](#)
-  [Bangladesh - Floods](#)
-  [Sierra Leone, Mudslide](#)
-  [Sri Lanka - Floods & Landslides](#)
-  [Somalia Drought and Cholera](#)
-  [Nigeria Complex Emergency](#)
-  [Kenya Drought](#)

**Emergency monitoring:  
Main sources**



# Scale of Disaster & Impact in INA

Ukuran	Coverage	Direct Impact	Physically Damage
<b>Small</b>	<b>&lt; = 1 District</b>	<ul style="list-style-type: none"><li>- Died &lt; 100 ppl</li><li>- IDPs &lt; 500 ppl</li><li>- Lost &lt; 25</li><li>- Heavy Injured &lt; 100</li></ul>	<b>Public Facilities &lt; 25 % House &lt; 100</b>
<b>Medium</b>	<b>2 - 3 District</b>	<ul style="list-style-type: none"><li>- Died 100 – 500 org</li><li>- IDPs 500 - 2500 org</li><li>- Lost 25 - 100</li><li>- Heavy Injured 100 – 500</li></ul>	<b>Public Facilities 25 % - 50 % House 100 – 500</b>
<b>Large</b>	<b>&gt; 3 District</b>	<ul style="list-style-type: none"><li>- Died &gt; 500 org</li><li>- IDPs &gt; 2500 org</li><li>- Lost &gt; 100</li><li>- Heavy Injured &gt; 500</li></ul>	<b>Public Facilities &gt; 50 % House &gt; 500</b>

# Disaster Scale and Responsible

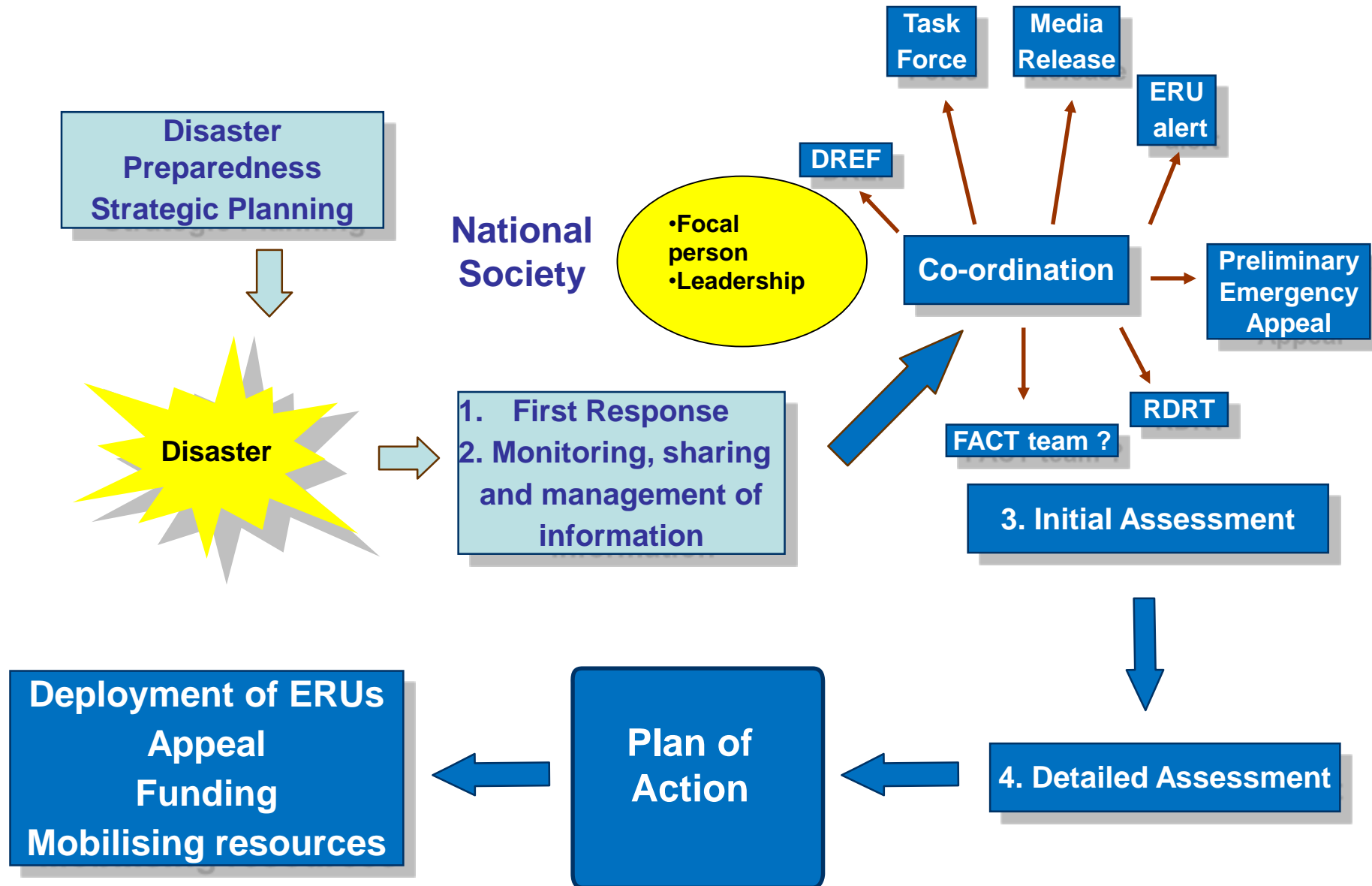
Capacity	Disaster Scale		
	Large	Medium	Small
Very Good	Province	District/Mun	District/Mun
Good	NHQ	Province	District/Mun
Poor	NHQ	Province	District/Mun



# Disaster Response Process



Palang  
Merah  
Indonesia



# Disaster Responses Preparedness



Palang  
Merah  
Indonesia

- Capacity Building (incl. Training, technical assistance)
- Community Development (Integrated Community Based Risk Reduction).
- Synergy of Warehouses (Central WH, Regional WH, Province WH and Local District WH).
- Consolidation of Equipment
- Strengthening National and International partnership and networking



# Disaster Responses Preparedness



Palang  
Merah  
Indonesia

- Improvement of volunteer capacities / activities (Satgana, SIBAT, KSR and TSR).
- Strengthening PMI structure (Chapters and Branches).
- Improvement operational transportation capacity (Helicopters, Hagloons, watertruck, ambulances, pick up, boatship, etc).
- Development of Communication System / Information Technology).





# Emergency Response and Relief



Palang  
Merah  
Indonesia

- Live saving (First Aid)
- Evacuation
- Temporary Sheltering  
(Tends ; Big, Medium, small/family)
- Ambulance and Health Services.
- Temporary Sheltering  
(Tends ; Big, Medium, small/family)
- Water and Sanitation  
(Watsan)
- Relief packets Distribution (Family kits, Hygiene kits, Baby kits, Blanket, Food items and others).





# Emergency Response



# Evacuation Support







# SAR & Evacuation





**Evacuation**



**Field Kitchen**



**Relief Distribution**



**Temporary Shelter**



# First Aid and Ambulance Services





# Field Hospital



Palang  
Merah  
Indonesia





# Evakuasi & Ambulan





# WASH (Water and Sanitation Services)





# Restoring Family Link



Palang  
Merah  
Indonesia





# Early Recovery



Palang  
Merah  
Indonesia

- Shelter > Community Participation.
- Water and sanitation (Watsan)
- Health services (medical rehabilitation), and public health promotion.
- Psychosocial Support Program (PSP).
- Distribution of early recovery kit (Tool kits).
- Kitchen kits and others





# Distribusi Air Early Recovery





# PSP (Psychosocial Support)



Palang  
Merah  
Indonesia





# Enviroment Cleaning



Palang  
Merah  
Indonesia





# Water Sources & Latrine reconstruction,



**Program Watsan : Penampungan Air Hujan)**



# ... Sheltering -



Palang  
Merah  
Indonesia





# ... *Huntara Mentawai* ...



Palang  
Merah  
Indonesia





# Medical Rehabilitation



# Recovery / Reconstruction

- Schools
- Hospital, clinics and Health centre
- Medical Rehabilitation centre
- Livelihood
- Community centre
- Training centre
- others





# Technical Support

- Indonesian Government and Local Government.
- International Technical Assistance (IFRC, ICRC, PNSs, International and National NGO's and others).
- Community Participation
- Private Sector Participation
- Corporate Social Responsibility (CSR)



# Scope of Partnership and Support



Palang  
Merah  
Indonesia

- Capacity Building
- Organizational Development.
- Resources Development.
- Logistic Management
- Stock relief procurement.
- Standardized Emergency Response Equipment
- Funding







Palang  
Merah  
Indonesia

...Terima Kasih...



Palang  
Merah  
Indonesia

**INDONESIA FOR PHILIPPINES**

RELIEF OPERATION FOR  
HAIYAN THYPOON VICTIMS PHILIPPINES