



Jateng
gayeng



Budgeting and Planning Practice

Disaster Management Implementation

Central Java Province

EWS



Resilient City



Resilient Village



Central Java

**Disaster
Resilience**

Disaster Management Agency
Central Java Province

A map of Indonesia with various regions and islands labeled. The regions shown include Aceh, North Sumatra, Riau, West Sumatra, Jambi, South Sumatra, Bangka Belitung Islands, West Kalimantan, Central Kalimantan, East Kalimantan, North Sulawesi, Gorontalo, North Maluku, West Papua, Papua, Maluku, Southeast Sulawesi, South Sulawesi, West Sulawesi, East Java, West Java, Banten, Lampung, Jakarta, Banten, West Java, Yogyakarta, Bali, West Nusa Tenggara, and East Nusa Tenggara. A large blue curved arrow points from the text 'Indonesia' to the map.

Consist of :

- A. 29 regencies, 6 cities
- B. 573 districts,
- C. 7.809 villages,
- D. 767 commune

Population (as per 2010) : 32,382,657 people (men: 16,091,112, women: 16,291,545)

POTENTIAL HAZARDS IN CENTRAL JAVA



TSUNAMI



Toxic Gas



Earthquake



Volcano



Typhoon



Flood



Landslides



Drought

Total	Regency	District	Village	Households
Hazards	35	573	8578	9,7 million
Flood	91%	51%	19 %	8%
Landslides	83%	6%	25 %	6, %
Drought	77%	38%	15 %	7%
Tsunami	11%	3%	1 %	1%
Earthquake	40%	20%	8 %	15%
Vulcanic Er.	31%	8%	3 %	2%



Forest Fire

Central Java:
 35 regencies
 573 districts
 8.578 village
 ± 9,7 million of hh

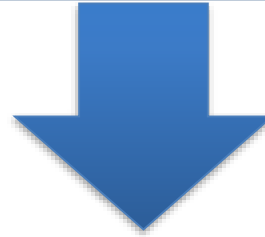
**Vulnerability
Index: No. 1**

**Risk Index:
No. 13**

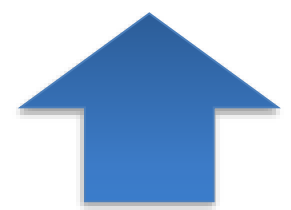


DRM Efforts

**Reduce the
Vulnerability**



**Enhance the
Capacity**



Disaster Risk Reduction Socialization

Building the Early Warning System

Structural and Non-Structural Mitigation

Empowering the Local Wisdom

Building the Evacuation System

**Strengthening the Rescue Team Working
Mechanism**

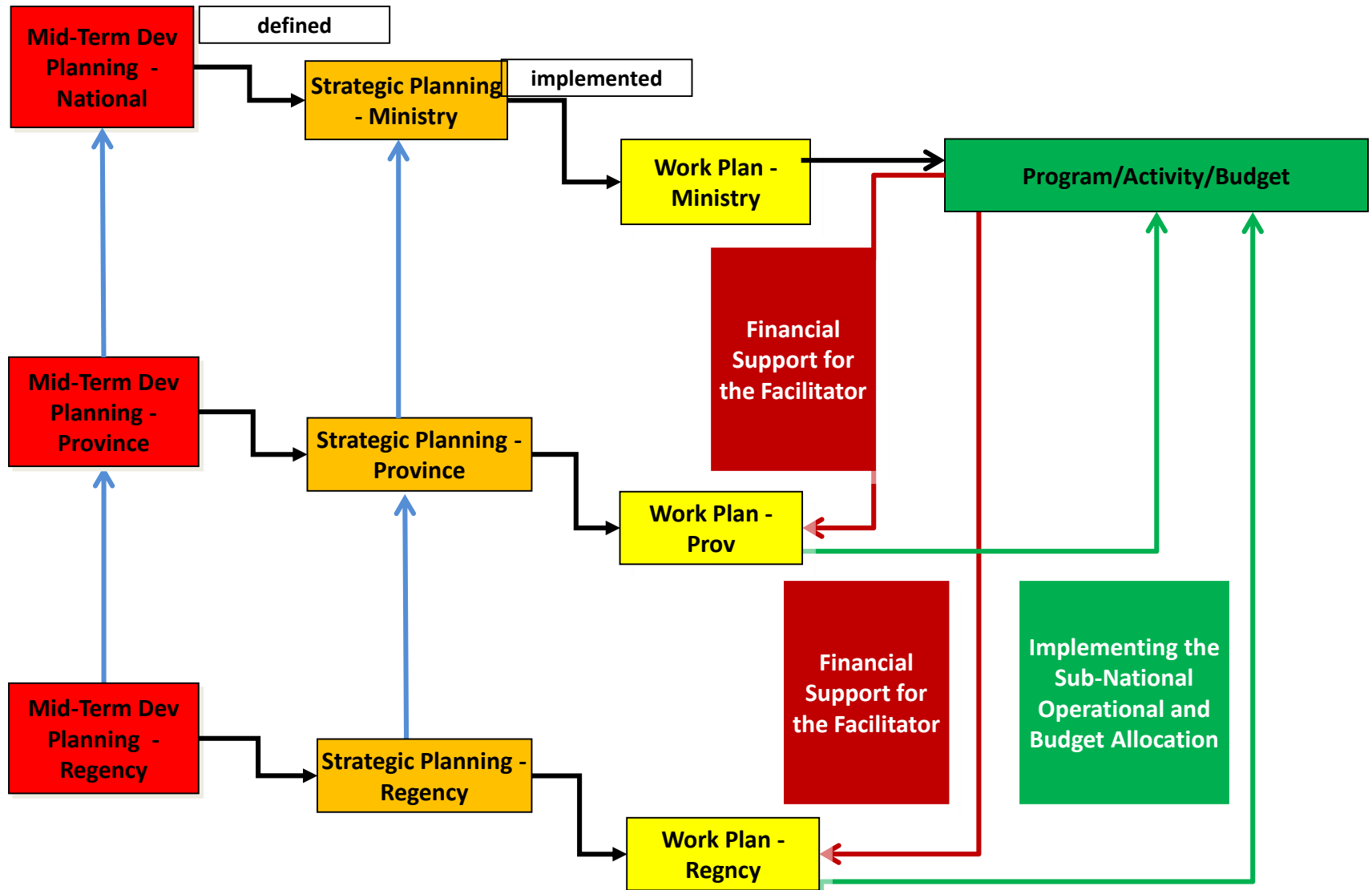
Disaster Resilient Village

Disaster Response Drill and Simulation

Creating the DRR Forum

Technology and Information Usage

National-Sub National Program Integration



→ based on above mechanism

PRINCIPLES ON MAINSTREAMING DISASTER RISK REDUCTION INTO SUB-NATIONAL DEVELOPMENT PLANNING AND BUDGETING



Budget Allocation in the Disaster Management Implementation Programme in Central Java

NO.	Year of	DM Budget (in various agencies)	Overall Budget	%
1	2013	69.932.087.000	13.684.684.479.000	0,51
2	2014	84.808.624.000	16.038.948.597.000	0,53
3	2015	96.803.315.585	19.631.559.656.000	0,49
4	2016	96.207.526.000	21.155.201.299.000	0,45



Disaster Management Budget, which has an essential function to support the disaster management efforts, has mostly **increased** every year, but in percentage it is still about the same: (+/-) 0.4-0.5% every year.

DISASTER MANAGEMENT PROGRAM AND ACTIVITY IN GOVERNMENT AGENCIES IN CENTRAL JAVA PROVINCE





Jateng
gayeng

BPBD PROVINSI JAWA TENGAH

Thank You Very Much!